



NOVA FLX L

NOVA 12V 10A FLX L

350-215

Publication date 2025-11-06



Table of Contents

1. Revisions and the edition of this document	4
1.1. Symbols	4
2. Installation — general information	5
2.1. Requirements for main switch, fuse and cable area	5
3. Variant overview NOVA	6
4. Component overview NOVA FLX L	7
5. Requirements for main switch, fuse and cable area	7
6. Connection of batteries, 12 V	8
7. PRO3 motherboard	9
7.1. Motherboard - description	9
7.1.1. Fuses	10
7.1.2. Connect load	11
7.1.3. Dip switch 1-8	11
Address setting for external communication (Dip switch 1-4)	12
Mains failure delay (dip 5-6)	12
Low battery voltage (dip 7)	12
LED (dip 8)	13
Battery test (dip 8)	13
7.1.4. Reboot to confirm changes in address, battery and alarm settings to parent system	13
7.1.5. Reset after battery replacement -PRO3	14
8. Multiple units into one parent system	14
9. Commissioning - how to start the unit	15
9.1. Connect in this order	15
10. Alarm displayed on cabinet door	16
11. Adjustment of tamper switch	18
12. Safety Information - Service and Troubleshooting	18
12.1. Troubleshooting	19
13. NOVA product sheet	19
13.1. SSF1014 certified* battery backup with communication	19
13.1.1. Technical specifications	20
13.1.2. Name, article number and e-number	20
13.1.3. About NOVA FLX	20
Flexibility	20
Fixed installation	20
13.1.4. Area of use	20
13.1.5. Installation video	20
13.2. Regulations and certifications	21
13.2.1. Requirements that the product meets	21
13.3. Reserve operating times, power outlet and load output current	21
13.3.1. Charging current for batteries and battery capacity	21
13.3.2. Power outlet NOVA FLX	22
13.4. Circuit boards - Technical data	22
13.4.1. Technical data, motherboard: PRO 3	22
Alarm	22
13.4.2. Technical data, alarm card for PRO 3 / NEO3	23
13.5. Power supply	24
13.5.1. Power supply - Technical Data LRS-150-12	24
13.6. Technical data enclosures	25
13.6.1. Enclosures - Technical Data FLX L	25
13.7. Link to the latest information	25
13.8. Warranty, support, country of manufacture and country of origin	25
13.8.1. Support	25



Spare parts	26
Support after the warranty period	26
Questions about product performance?	26
13.9. Product life cycle, environmental impact and recycling	26
13.10. Batteries - recommended, not included	26
13.10.1. Batteries are not included they are sold separately	26
13.10.2. Battery combinations NOVA FLX L	26
13.10.3. 45 Ah, 12 V AGM battery	27
13.10.4. Reserve operating times for different alarm classes - overview	27
14. Address and contact details	28

1. REVISIONS AND THE EDITION OF THIS DOCUMENT

The current and most recently published edition of this document is available at www.milletechnik.com.







The validity of this document can not be guaranteed, as new editions are published without prior notice.

Instructions for use in Swedish in original.¹

Instructions for use, technical data and translations thereof may contain errors. It is always the responsibility of the installer to install the product in a safe manner.

1.1. Symbols



Table 1. Symbol Explanation

Symbols	Denomination	Explanation
	Warning	Risk of electric shock, improper installation or hot surfaces. Appears in some manuals
	Note	Used for supplementary information that clarifies the text.
	Caution/Important	Indicates the risk of equipment damage or malfunction. Also used for information that is important but not security-related
	Tips	Displays practical advice or shortcuts for installation, operation, or service.
	CE marking	The product complies with applicable EU directives and harmonised standards.
	Read the manual	Please read manual before installation and service.

¹Translations in languages other than Swedish are indicative only and not safely reviewed. Translation should always be checked against the Swedish original to ensure accurate information





Symbols	Denomination	Explanation
	Do not dispose of in household waste	The product is covered by the WEEE Directive and must not be disposed of with household waste, it must be recycled and delivered to a recycling centre.
	Recycling	Packaging, products and other materials that do not contain electronics must be recycled in accordance with local environmental regulations.



READ THIS FIRST!

Electronics, regardless of enclosure, are intended for use in a controlled indoor environment. Mains voltage should be disconnected during installation.

It is the installer's responsibility that the system is suitable for its intended use. Only authorized persons should install and maintain the system.

All information subject to change.

2. INSTALLATION — GENERAL INFORMATION

Installation shall be carried out by a competent electrician in accordance with the applicable national electrical installation rules.

The product is of protection class I and must be connected to a grounded 230 V AC circuit.

- A main switch according to IEC 60947-1 shall be provided in the fixed installation. The switch should be easily accessible and clearly marked with its function.
- The area of the supply cable shall be at least 1,0 mm² and fitted with a fuse T 2,5 A (slow-blown) or equivalent.
- AC and low voltage cables must not be pulled together. Keep separate cable chutes or bundles
- Check that protective earth (PE) is properly connected before turning on voltage.
- Ensure free air circulation around the enclosure at least 100 mm, unless otherwise specified. Ventilation openings must not be covered.
- The product is intended for indoor installation in normal environment (pollution number 2 and indoor class 1).

These general requirements apply to all Milletechnik products with 230 V mains connection.

2.1. Requirements for main switch, fuse and cable area

In order to comply with applicable electrical safety requirements, the installation shall be equipped with a main switch according to IEC 60947-1.

Table 2. Main switch and fuse

Component	Requirements
Main switch	A main switch according to IEC 60947-1 shall be included in the installation and be easily accessible. Separated phase (F) and neutral (N)



Component	Requirements
Fuse	The supply circuit shall be protected by a fuse or automatic fuse with rated current according to the product specification (normally T 2,5 A slow-blown or equivalent). Refer to the device's nameplate.
Fuses	Approved type according to IEC 60127.
Cross-sectional area (230 V)	At least 1,0 mm ²
Cable length	In the case of longer wiring, voltage drops should be taken into account so that the operating voltage does not fall below 230 V ± 10% at the unit.
Strain relief	All cables must be properly secured and strain relief checked before energizing the unit.

These requirements apply to all Milletechnik products with 230 V mains connection.

The table below shows recommended cable area for low current installations at different voltages, current strengths and cable lengths. Values are based on copper cable and a maximum voltage drop of approximately 3% to ensure operational reliability.

Table 3. Cable area weak current

V	Current strength (A)	Cable length 10 meters	Cable length 30 meters	Cable length 60 meters	Cable length 100 meters
12 V	2 A	0,75 mm ²	1,5 mm ²	2,5 mm ²	4 mm ²
12 V	5A	1,5 mm ²	2,5 mm ²	6,0 mm ²	-*
12 V	10A	2,5 mm ²	6,0 mm ²	-*	-*

* Cable area would exceed connector terminal dimensions therefore it is not possible with thicker cable than 6 mm^{1,2}

3. VARIANT OVERVIEW NOVA

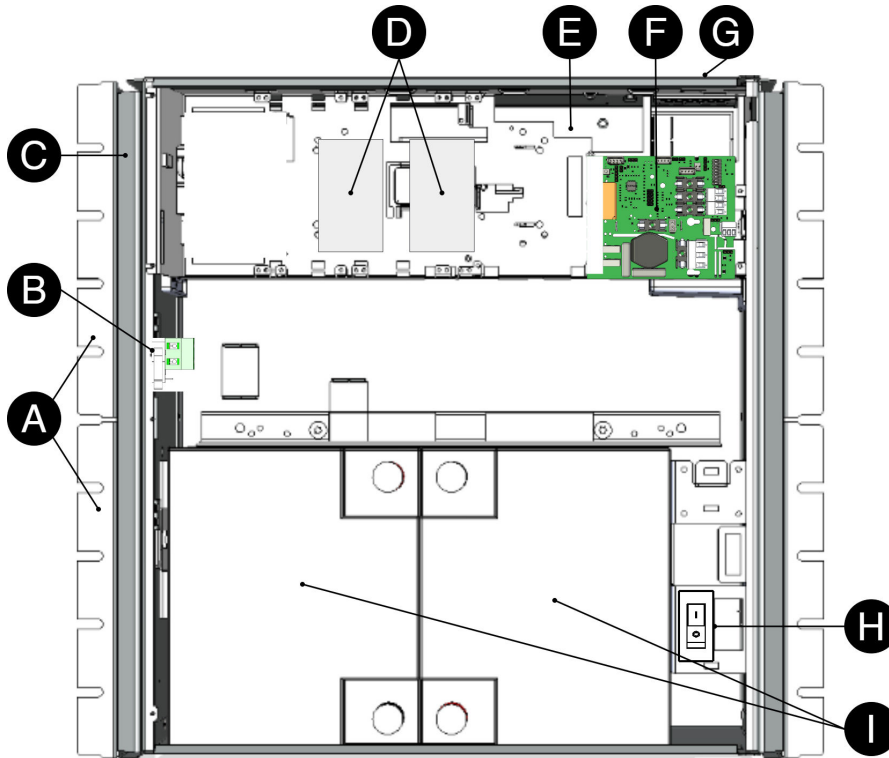
Table 4. Variant overview

Product name	Certified name	Mother-board: PRO1	Mother-board: PRO2:	Mother-board: PRO2 v3	Mother-board: PRO3
NOVA 12V 10A FLX S	12 V meets the requirements but is not certified.	-	-	-	x
NOVA 12V 10A FLX M		-	-	-	x
NOVA 12V 10A FLX L		-	-	-	x
NOVA 24V 5A FLX S	NOVA 25 50-FLX-S	X	X	-	X
NOVA 24V 10A FLX S	NOVA 25 100-FLX-S	X	X	-	X
NOVA 24V 5A FLX M	NOVA 25 50-FLX-M	X	X	-	X
NOVA 24V 10A FLX M	NOVA 25 100-FLX-M	X	X	-	X
NOVA 24V 15A FLX M	NOVA 25 150-FLX-M	X	X	X	-
NOVA 24V 25A FLX M	NOVA 25 250-FLX-M	X	X	X	-
NOVA 24V 5A FLX L	NOVA 25 50-FLX-L	X	X	-	X
NOVA 24V 10A FLX L	NOVA 25 100-FLX-L	X	X	-	X
NOVA 24V 15A FLX L	NOVA 25 150-FLX-L	X	X	X	-
NOVA 24V 25A FLX L	NOVA 27 250-FLX-L	X	X	X	-





4. COMPONENT OVERVIEWNOVA FLX L



Batteries should be placed as in the picture.

Table 5. Component overview

Number	Explanation
A	Bracket, reversible for wall mounting or 19 "rack.
B	Sabotage contact.
C	Cabinet in powder-coated sheet metal.
D	Optional card slot.
E	Power supply.
F	Motherboard.
G	Cable entries.
H	Battery fuse.
I	Space for batteries.

5. REQUIREMENTS FOR MAIN SWITCH, FUSE AND CABLE AREA

In order to comply with applicable electrical safety requirements, the installation shall be equipped with a main switch according to IEC 60947-1.



Table 6. Main switch and fuse

Component	Requirements
Main switch	A main switch according to IEC 60947-1 shall be included in the installation and be easily accessible. Separated phase (F) and neutral (N)
Fuse	The supply circuit shall be protected by a fuse or automatic fuse with rated current according to the product specification (normally T 2,5 A slow-blown or equivalent). Refer to the device's nameplate.
Fuses	Approved type according to IEC 60127.
Cross-sectional area (230 V)	At least 1,0 mm ²
Cable length	In the case of longer wiring, voltage drops should be taken into account so that the operating voltage does not fall below 230 V ± 10% at the unit.
Strain relief	All cables must be properly secured and strain relief checked before energizing the unit.

These requirements apply to all Milletechnik products with 230 V mains connection.

The table below shows recommended cable area for low current installations at different voltages, current strengths and cable lengths. Values are based on copper cable and a maximum voltage drop of approximately 3% to ensure operational reliability.

Table 7. Cable area weak current

V	Current strength (A)	Cable length 10 meters	Cable length 30 meters	Cable length 60 meters	Cable length 100 meters
12 V	2 A	0,75 mm ²	1,5 mm ²	2,5 mm ²	4 mm ²
12 V	5A	1,5 mm ²	2,5 mm ²	6,0 mm ²	-*
12 V	10A	2,5 mm ²	6,0 mm ²	-*	-*
* Cable area would exceed connector terminal dimensions therefore it is not possible with thicker cable than 6 mm ^{1 2}					

6. CONNECTION OF BATTERIES, 12 V

Battery wiring is mounted on the circuit board upon delivery. Pictures below only show how to connect wiring.

- Place the batteries in the cabinet with the battery terminals facing outwards, against the cabinet door.
- Connect the battery cable. Red cable on plus and black cable on minus.
- Disconnect the mains power (if possible) before replacing batteries.



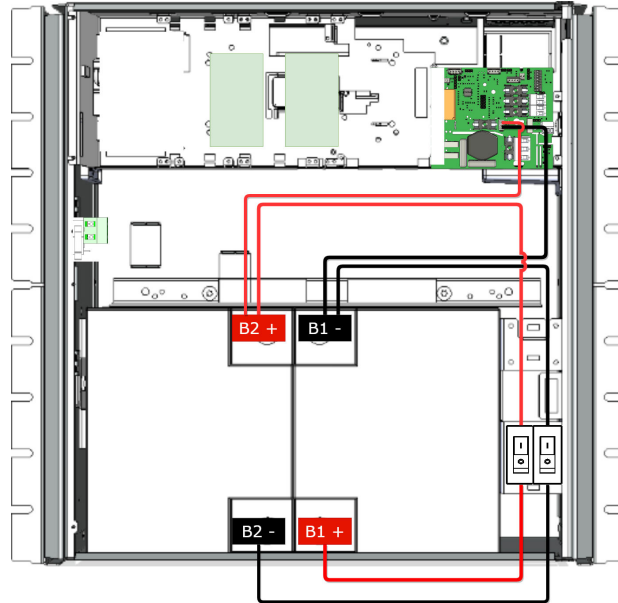


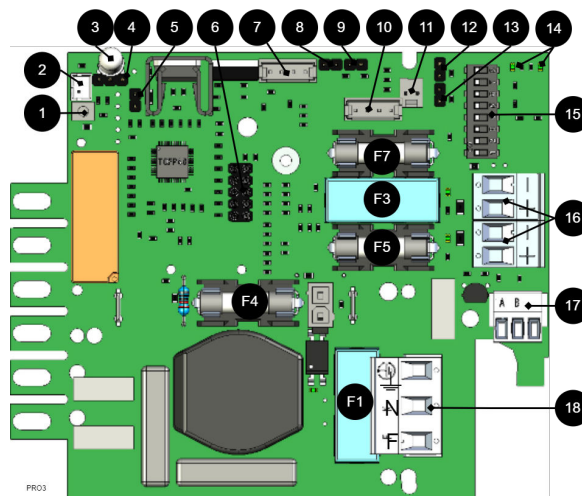
Table 8. Plugging in batteries

No.	Explanation
B1+	Connects to + fuse
B1 -	Connects - fuse and motherboard.
B2+	Connects to + fuse and motherboard.
B2 -	Connects - fuse.

7. PRO3 MOTHERBOARD

7.1. Motherboard - description

Figure 1. PRO3



The motherboard controls the device and distributes power. See technical data for more information.



Table 9. Circuit Board Overview, Explanation

No .	On circuit board	Explanation
1	J24	Control to power supplies. Internal use.
2	J5	1=Oprio 2=external alarm.
3	D9	LED.
4	JU1	For external LED in door.
5	J11	Reset jumper, used when changing batteries.
6	JU6	Connection for relay cards or communication cards or for updating firmware. Only one card or contact at a time can fit.
7	J29	Connection to fan.
8	J101	Connection to tamper contact.
9	J17	Connection to tamper switch from battery box.
10	J35	Not used.
11	J14	Alarm input from external battery fuse, from battery box.
12 and 13	J10 and J100	Alarm from external option card.
14	D18, D19	LEDs show the status of communication (RS-485).
15	S3	Dip switch
16	P2:1-4	Load outputs
17	P3:1-3	Communication connection, RS-485.
18	P1:1-3	Connection to the mains.

7.1.1. Fuses

Table 10. Fuses on PRO3 / NEO3

Fuse	Type	Explanation
F1	T2.5A	Mains fuse
F3	T16A	Load fuse 1 - (for P2:2)
F4	T16A	Battery fuse
F5	T3A-T10A*	Load fuse 1+ (for P2: 1)
F7	T3A-T10A*	Load fuse 2 + (for P2:3)

*The size of the fuse depends on the battery backup (rated) power outlet (A) .



WARNING FOR REPLACING FUSES (CURRENT STRENGTH, A)

There is a risk of damage if the fuse is changed to a larger one than what the unit is delivered with. The function of the fuse is to protect the connected load and cables against damage and fire. It is not possible to change the fuse to a larger one to increase the power output.



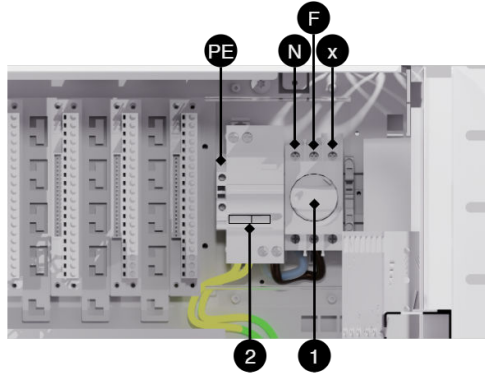


Table 11.

1	
2	
N	
F	
x	

7.1.2. Connect load



MAX CURRENT

The maximum current must not be exceeded. Max current is indicated on [nameplate](#) on the device.

If there are one or more connection cards (to increase the number of load outputs), load must be connected there and not on the main board.

Table 12. Load connections

On circuit boards	Explanation
P2: 1	Connection for load 1 +.
P2: 2	Hookup for load 1 -.
P2: 3	Connection for load 2 +.
P2: 4	Connection for load 2 -.

7.1.3. Dip switch 1-8

Dip-Switch has several different modes:

Table 13. Dip switch 1-8

Dip switch	In mains operation or in battery operation
1	Address for external communication.



Dip switch	In mains operation or in battery operation
2	Address for external communication
3	Address for external communication
4	Address for external communication
5	Sets alarm for mains failure delay
6	Sets alarm for mains failure delay
7	Sets alarm limit for low battery voltage in battery operation.
8	Turns off or turns on LED indication, for everything except alarm in case of triggered tamper contact which is always indicated regardless of dip-switch position.
8 in sequence	Perform battery tests.

ADDRESS SETTING FOR EXTERNAL COMMUNICATION (DIP SWITCH 1-4)

Dip-Switch S1: 1-4 sets addressing.

Table 14. Addressing Dip-Switch 1-4

	Dip: 1	Dip: 2	Dip: 3	Dip:4
Adress 1	ON	OFF	OFF	OFF
Adress 2	OFF	ON	OFF	OFF
Adress 3	ON	ON	OFF	OFF
Adress 4	OFF	OFF	ON	OFF
Adress 5	ON	OFF	ON	OFF
Adress 6	OFF	ON	ON	OFF
Adress 7	ON	ON	ON	OFF
Adress 8	OFF	OFF	OFF	ON
Adress 9	ON	OFF	OFF	ON
Adress 10	OFF	ON	OFF	ON
Adress 11	ON	ON	OFF	ON
Adress 12	OFF	OFF	ON	ON
Adress 13	ON	OFF	ON	ON
Adress 14	OFF	ON	ON	ON
Adress 15	ON	ON	ON	ON

MAINS FAILURE DELAY (DIP 5-6)

It is possible to change the time for when the alarm for a power outage should be given. Use the matrix to set the alarm.

Table 15. Mains failure delay

Alarms for mains failure are given after:	Dip 5	Dip 6
3 seconds	OFF	OFF
30 minutes	ON	OFF
60 minutes	OFF	ON
240 minutes (4 hours)	ON	ON

LOW BATTERY VOLTAGE (DIP 7)

Dip: 7 has the same function regardless of whether the unit is in mains or battery operation or whether the tamper switch is held down.

Table 16. Low battery voltage

Alarm for low battery voltage is given when	Dip 7
22,8 V*	ON
24 V	OFF





Alarm for low battery voltage is given when	Dip 7
*25% of battery capacity remains.	

LED (DIP 8)

LED/battery-test always lights up when the door is open.

Dip-switch 8=ON turns off the LED.

Dip-switch 8=OFF turns on the LED.

BATTERY TEST (DIP 8)

To do a battery test, dip 8 needs to change position and five seconds need to pass before the test is initiated.

- If dip 8 in original position is on OFF then switch dip 8 to: ON (wait 5 seconds) and then switch back to OFF.
- If dip 8 in original position is on ON then switch dip 8 to: OFF (wait 5 seconds) and then switch back to ON.

This activates the battery test after 3-8 seconds. The battery test lasts for about 6 seconds and then the LED flashes yellow quickly. Aged battery alarms may be indicated while the battery test is being performed.

Only reset dip 8 when the test is complete.

7.1.4. Reboot to confirm changes in address, battery and alarm settings to parent system

After the dip-switch has been set for various parameters, the device's software needs to be restarted. This is for the new settings to be stored and take effect.



IMPORTANT

Rebooting according to this procedure does not interrupt the output voltage.

Restarting the device software is done by jumpering J11 (PRO3)



IMPORTANT

Reboot must be done every time a change is made to the device.

NEO cannot be connected to communication/UC.



7.1.5. Reset after battery replacement -PRO3

After battery replacement, the device needs to measure the capacity of new batteries and clear previously set battery capacity. All alarms are cleared from the units memory, statistics remains and can not be cleared.

- Insert jumper on J11 and remove jumper on J11

After doing step, the battery capacity is cleared in the units memory and is ready to read the new battery capacity.

This procedure needs to be done each time the batteries are replaced or when connecting a battery box.



NOTE ON TEST OF BATTERIES

At start-up, it takes 72 hours before the system performs battery tests. This is to ensure fully charged batteries and to collect averages / history for at least 72 hours. Thereafter, every four hours, a qualified cell sample of the batteries is performed.



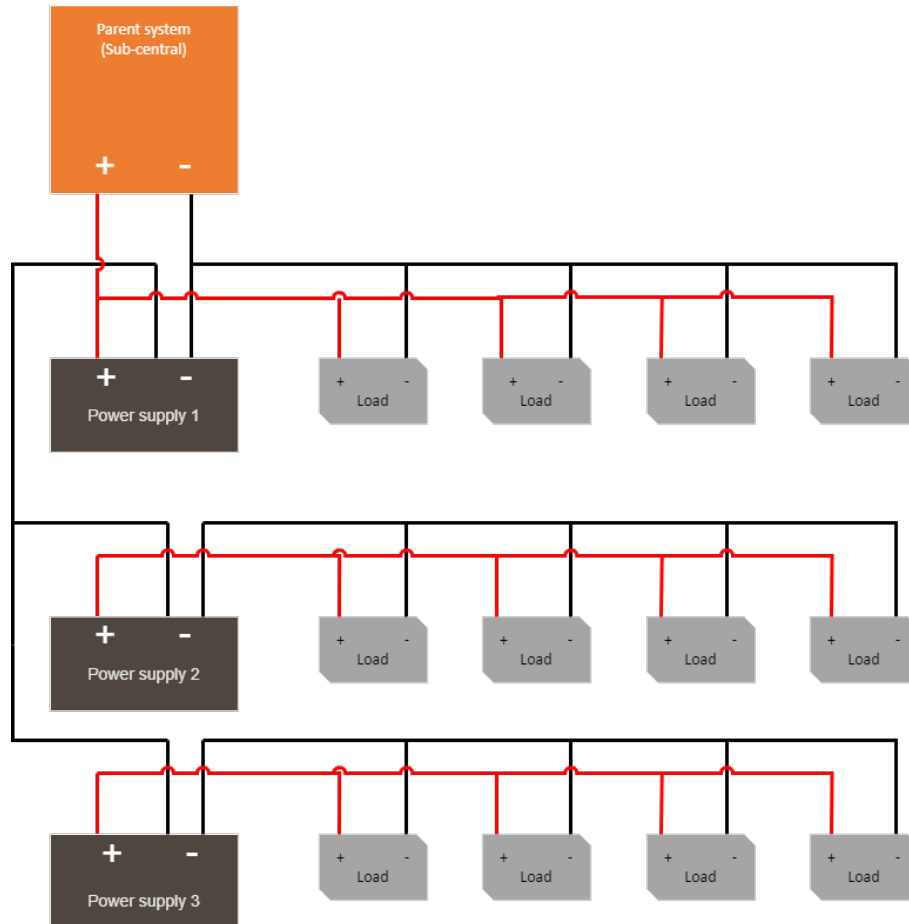
NOTE ON START-UP WITH SHORT-CIRCUITED BATTERIES

Peak current at start-up with short-circuited batteries: Up to 30 A p-p for 200 ms. Always follow the start-up procedure.

8. MULTIPLE UNITS INTO ONE PARENT SYSTEM

To connect several units to a higher system, the load-minus between several battery backups must be connected together.





9. COMMISSIONING - HOW TO START THE UNIT

1. connect load, alarm and possibly. other connections.
2. Connect batteries
 - Connect / switch on fuses
3. Screw the mains cable into the terminal block and attach the terminal block to the motherboard.
 - Switch on mains voltage.

9.1. Connect in this order

To minimize the risk of errors that may occur in connection with a short circuit, connections to the motherboard must be made in this order.



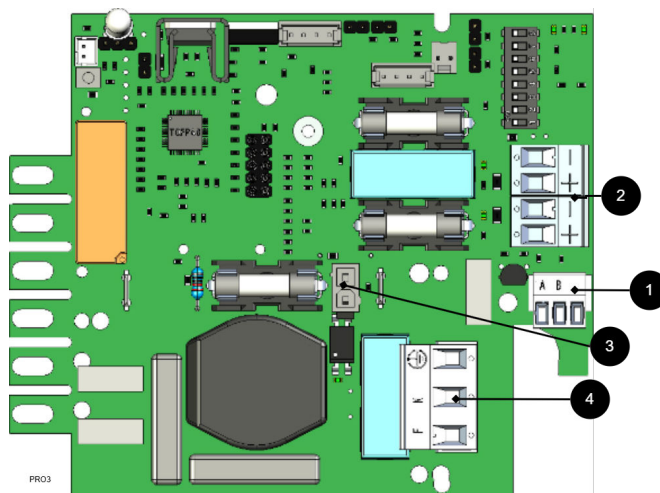


Table 17. Connect in this order

Nr	Explanation
1	Connect alarm.
2	Connect load.
3	Connect batteries
4	Connect mains.



IMPORTANT

For setting dip switches and addressing — see online manual via QR code.

The unit works normally when the indicator LED on the outside of the cabinet door lights up with a solid green light. See front panel for other status indications.

It may take up to 72 hours before the batteries are fully charged.

10. ALARM DISPLAYED ON CABINET DOOR

In normal mode, the indicator LED shows a solid green light.



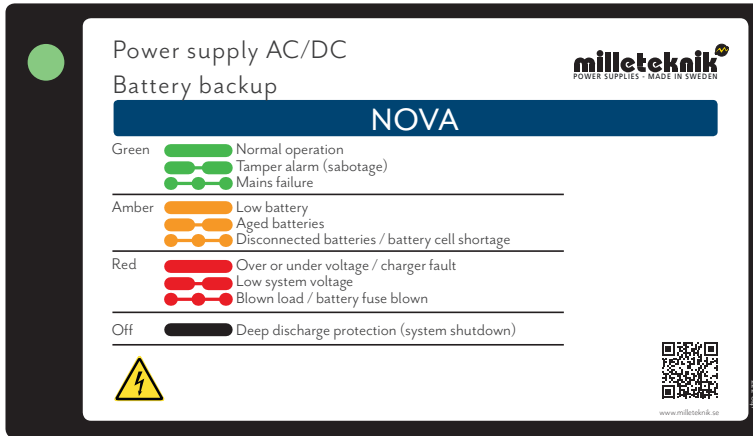


Table 18. The indicator diode shows.

The indicator diode (LED) shows	Explanation
Solid green light	Normal operation.
Slow green flashes	Sabotage alarm.
Fast green flashes	Mains failure.
Solid yellow light	Low battery voltage.
Slow yellow flashes	Aged batteries.
Rapid yellow flashes	Disconnected batteries or battery cell shortage.
Solid red light	Overvoltage or undervoltage or charger fault.
Slow red flashes	Low system voltage.
Rapid red flashes	Blown load or battery fuse has blown.
No light / off	Deep discharge protection is activated. (System shutdown).

When operating system: If the indicator LED is off, deep discharge protection has come into force.

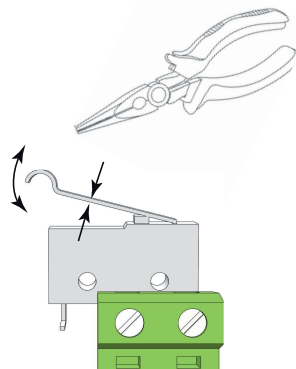


NOTICE

If the indicator light flashes every 15 seconds, the battery is fully charged and the charge is in rest phase to extend battery life. In the event of a power failure during the rest phase, the battery backup switches to battery operation as usual



11. ADJUSTMENT OF TAMPER SWITCH



The tamper switch lever must be in the closed position when the cabinet door is closed. If the alarm goes off ("tamper alarm"), the lever may need to be adjusted.

The lever is adjusted by the following steps:

1. Pinch with pliers in the middle of the lever.
2. Carefully adjust the lever in the desired direction (up / down).
3. Check by closing the door. A click is heard when the contact is closed.



NOTICE

Tamper switch will not give an alarm when closed and locked the door.

12. SAFETY INFORMATION - SERVICE AND TROUBLESHOOTING

- If possible, disconnect the mains supply before starting any work, such as servicing, battery replacement, metering or troubleshooting.
- Remove the battery fuse/plug before working on the DC side.
- Check that all cables are properly connected and grounded before re-energizing the unit.
- The product may contain components that become hot during operation. Avoid touching internal parts immediately after the power has been switched off.
- If fuses disengage repeatedly see [Troubleshooting \[19\]](#) or disconnect the device and contact Milletechnik technical support.
- In case of suspicion of damage, liquid ingress or burnt odour, the product must not be used until it has been checked by competent personnel.
- During operation, the housing should be closed and locked (if the device has a lock).
- Only authorized service personnel may perform repairs on the device.
- Use only original fuses and batteries of the same type and value as specified in the manual/product sheet.





Milletechnik is not responsible for damage caused by improper handling, modification or unapproved components.

12.1. Troubleshooting

If the device does not work as expected, go through the following checks:

Table 19. Troubleshooting

Problem	Possible cause	Action
No output voltage.	No mains voltage, fuse triggered or battery failure.	Check the supply, fuses and battery connections.
Battery does not charge.	Faulty battery connection or battery fuse has blown.	Check battery cables and replace battery fuse if necessary.
The device starts but alarms.	Batteries not sufficiently charged or faulty load or battery.	Wait 72 hours until the batteries are fully charged. Ensure that the connected load does not exceed the rated current.
LED flashes.	Information, warning or error.	See panel or manual for explanation.
Fuses blow frequently.	Short circuit or overload.	Check connected devices, change the fuse only after the cause is fixed.
The device gets hot	High load or insufficient ventilation	Check that the rated current is not exceeded and that air flow is present around the housing.

If the problem persists after these checks, contact Milletechnik support and provide the product name, serial number and a brief error description.

13. NOVA PRODUCT SHEET

13.1. SSF1014 certified* battery backup with communication

Figure 2. NOVA FLX L



NOVA FLX L can be mounted on a wall or in a 19" rack.

*12 V and 24 V units are certified, with the exception of the NOVA 12V 10A FLX L which meets the requirements but is not certified.



13.1.1. Technical specifications

These technical specifications are subject to change without notice.

13.1.2. Name, article number and e-number

Table 20. Name, article number and email number.

Name	Article number	E-number
NOVA 12V 10A FLX L	FL01P30012P100	52 136 49

13.1.3. About NOVA FLX

- Controlled charging function.
- Qualified battery capacity test
- Can be supplemented with several different optional cards.
- Mounted on a wall or in a 19 "rack.
- Flexible battery capacity with battery boxes increases backup operating time.

FLEXIBILITY

NOVA FLX S can have an extra battery box. NOVA FLX M and NOVA FLX L with 1-4 extra battery boxes *. NOVA FLX M and NOVA FLX L with battery shelves in 19 "rack *. * The battery boxes and shelves are connected via a 9-pin connector. The battery box has room for up to 2 pcs. 45 Ah batteries per battery box. Battery shelves have room for 2 pcs. 45 Ah batteries (Medium) and up to 2 pcs. 150 Ah batteries (Large) per each battery shelf.

FIXED INSTALLATION

The product is intended for fixed installation. The battery backup must be installed by a qualified installer.

13.1.4. Area of use

NOVA FLX mostly used for: Access control system, burglar alarms, (integrated security systems), in public environments such as schools, offices and commercial properties.

13.1.5. Installation video

<https://www.milleteknik.se/nova-24-v-5-a-25-a-pro2-flx-l-installation-och-driftsattning/>





13.2. Regulations and certifications

13.2.1. Requirements that the product meets

Table 21. The product meets the following requirements.

EMC:	EMC Directive 2014 / 30EU
Electricity:	Low voltage directive: 2014/35 / EU EN 62368-1
CE:	EC Directive in force: 765/2008
Emissions:	EN61000-6-:2001 EN 55022:1998: -A 1:2000, A 2:2003 Class B, EN61000-3-2:2001, EN 55032 (replaces EN 55022)
Immunity:	EN61000-6-2:2005, EN61000-4-2, -3, 4, -5, -6, -11 SS-EN 50 130-4:2011 Edition 2, EN50131-6
Emission	EN55032 (CISPR32) Class B
Environment	REACH: The product complies with REACH Regulation (EC) No 1907/2006. RoHS: The product complies with RoHS Directive 2011/65/EU with additions. SCIP: registered under the EU Waste Directive where applicable, (2008/98/EC). WEEE: The product contains electrical components or wiring and is covered by the WEEE Directive (2012/19/EU). End-of-life products must be returned to a recycling centre Batteries: If the product is supplied with batteries, it is covered by the Battery Regulation (2023/1542). Expired batteries must be removed from the product and returned to a recycling centre
Machinery Directive	The product is part of electrical systems, is subject to the relevant electrical and safety directives and is not a machine according to the Machinery Directive (2006/42/EC).
Ecodesign	Milleteknik's products are intended for professional use and are therefore not directly covered by the Ecodesign Regulation (EU 2019/1782). As some components may be covered, we nevertheless disclose relevant information to give our customers confidence in their choice

Efficiency (%) ^a	Standby consumption, typical (W):
88%	1.94 W

^aAt rated load.



13.3. Reserve operating times, power outlet and load output current

13.3.1. Charging current for batteries and battery capacity

The unit reads the connected system load and charges the batteries with available residual current from the power supply. The device performs qualified* battery tests and notifies when batteries need to be replaced. The batteries are charged gently to extend their life and protection is available against overcharging.



Table 22.

12 V / 24 V	Maximum charging current for batteries
NOVA FLX L	6 A

The battery backup has controlled charging ** (controlled charging) which prevents batteries from being overcharged and extends their service life significantly. The NOVA series must be used with AGM batteries.

**NOTE**

NOVA 12V 10A FLX S, NOVA 12V 10A FLX M and NOVA 12V 10A FLX L meet the requirements according to EN50131-6 and SSF 1014 but have not been certified.

13.3.2. Power outlet NOVA FLX

NOVA 12V 10A FLX L	Unit without battery box	Unit with 1 battery box	Unit with 2 battery boxes
Battery	2 st 45 Ah	-	-
Max battery capacity	90 Ah	-	-
According to. SSF1014, Alarm Class 1-2	2.2 A	-	-
According to. SSF1014, Alarm Class 3-4	0.9 A	-	-
I _{max} A (max discharge current)	10 A	-	-
I _{max} b (max charging current)	10 A	-	-
I _{min} is always 0 A.			

13.4. Circuit boards - Technical data

13.4.1. Technical data, motherboard: PRO 3

Info	Explanation
Short name:	PRO 3
Product description	Motherboard in battery backup with advanced functions and communication to parent system.
Own consumption, with relay card	Less than 100 mA. All relays retracted on external alarm card in normal mode.
Switching time from mains voltage to battery operation	When batteries are idle: <5 microseconds. When batteries are in charge cycle: 0 (none). Batteries rest for 20-day cycles, after which a charging cycle picks up and charges the batteries for 72 hours. If there is a power failure when batteries are in the charge cycle, there is no switching time.
Incoming electricity network	230 V AC -240 V AC, 47-63 Hz.
Fuse on mains	See table: Fuses.
Indication	Indicator diode on circuit board / cabinet door

ALARM

Alarm displayed on indicator LED on the front of the cabinet.





- Cell fault in battery or unconnected battery.
- Charger fault, undervoltage.
- Charger fault, overvoltage.
- Low system voltage, system voltage below 24.0 V in mains operation.
- Low battery voltage, below 24.0 V DC in case of mains failure.
- Power failure alarm.
- Sabotage switch.
- Fuse fault.
- Aged battery

Expanding alarm functions are available via communication or with alarm cards.

Table 23. Fuses

Fuses	Type
10 A	T10A
Power supply fuse of 12V one	T2.5AH250V. Ceramic.
Mains fuse for 24 V units up to 15 A	T2.5AH250V. Ceramic.

Table 24. Protection

Info	Explanation
Deep discharge protection (Yes / No)	Yes. 12 V units protection at 10V, +/- 0.5 V. 24 V units protection at 20, +/- 0.5 V.
Surge protection (Yes / No)	Yes
Overtemperature protection (Yes / No)	Yes
Short circuit protected = (Yes / No)	Yes

13.4.2. Technical data, alarm card for PRO 3 / NEO3

Info	Explanation
Card name:	PRO 3
Version:	1.2
Product description	Motherboard in battery backup with advanced functions and communication to superior systems.
Recommended environment	Indoors, class 1. Ambient temperature: + 5 ° C - 40 ° C.
Protection class	IPX0
Recommended installation	NOVA Series (only 5 A and 10 A)
Input voltage	13.6 VDC, 27.3 VDC
Self-consumption	40 mA
Alarm via	Alternating relay
Number of alarm outputs	4 pcs
Certified according to	EN 50131-6, SBF 110: 8, SSF1014, Meets alarm class 4, SSF 1014, edition 5
Certificate number (SBSC)	20-117
The product meets the requirements according to	CE directive according to: 765/2008, EMC Directive 2014 / 30EU, Emission: EN61000-6-: 2001, EN55022: 1998: -A1: 2000, A2: 2003 Class B, EN61000-3-2: 2001, Immunity: EN61000- 6-2: 2005, EN61000-4-2, -3, 4, -5, -6, -11. SS-EN 50 130-4: 2011 Edition 2 & SSF1014 Alarm class 1-4 (Burglar alarm).
Producer	Milleteknik AB
Country of origin	Sweden

Manufactured in Milleteknik's factory in Partille, Sweden.

This translation is not verified and should be cross referenced with the swedish original before use.



Table 25. Alarm overview

Alarm overview in alphabetical order	Relay 1 * / Alarm output 1	Relay 2 * / Alarm output 2	Relay 3 * / Alarm output 3	Relay 4 * / Alarm output 4	Communication (P5: 1-9)	Indicator LED on main card and LED on door.
Network outages	X	-	-	-	X	X
Fuse fault	-	X	-	-	X	X
Sabotage switch	-	-	-	X	X	X
Fan fault	-	-	-	-	X	-
Charger fault, overvoltage	-	X	-	-	X	X
Charger fault, undervoltage	-	X	-	-	X	X
Cell fault or unconnected battery	-	X	-	-	X	X
Low system voltage. **	-	-	X	-	X	X
Low battery voltage (<24.0 V DC) or power failure	-	X	-	-	X	X
Overtemperature	-	-	-	-	X	-
Undertemperature	-	-	-	-	X	-
Undertemperature	-	-	-	-	X	-
Short battery life left	-	-	-	-	X	-
Aged battery	-	X **	-	-	X **	X **
Overcurrent 100%, minute average	-	-	-	-	X	-
Overcurrent 80%, daily average	-	-	-	-	X	-
Overcurrent 175%, second average	-	-	-	-	X	-
* Alarm on potential-free relay contact.						
*** Not on NEO battery backups.						

Table 26. RS-485 on relay board

RS-485 on P4: 1-4	Explanation
P4:1	GND
P4:2	RX
P4:3	TX
P4:4	+5V

13.5. Power supply

13.5.1. Power supply - Technical Data LRS-150-12

In:
NOVA 12V 10A FLX L

Info	Explanation
Output voltage	13,6 V
Output current	0 A - 12.5 A





Info	Explanation
Output voltage, ripple	150 mVp-p
Overvoltage	13,8 V - 16,2 V
Voltage recharge, ripple / current limitation	Less than 0.6 Vp-p
Efficiency	87.5%
Current limitation	110% - 140%
Constant voltage	+/- 0.5%
Regulatory accuracy	* / - 1.0%
Input current (230 V)	1,7 A
Mains voltage frequency	47 Hz- 63 Hz
Mains voltage	230 V AC - 240 V AC
Brand effect	150 W
Temperature range	-30°C - +70°C
Humidity range	20% - 90% RH non-condensed

The power supply is adapted and calibrated with the battery / hardware of the battery backup. Only power and calibrated power supplies may be used. Contact support when changing power supplies. Use of power supplies coming from another source may cause damage not covered by the warranty. Warranty is canceled if power supplies (from a source other than support / designated by support) that are not correctly calibrated are used.

13.6. Technical data enclosures

13.6.1. Enclosures - Technical Data FLX L

Info	Explanation
Name	FLX L
Enclosure class	IP 32
Measure	Height: 444 mm, width 438 mm, depth 212 mm
Height units	10 HE
Mounting	Wall or 19 "rack
Ambient temperature	+ 5 ° C - + 40 ° C. For best battery life: + 15 ° C to + 25 ° C.
Environment	Environmental class 1, indoors. 20% ~ 90% relative humidity
Material	Powder coated sheet
Color	Black
Cable entries, number	4
Batteries that fit	2 st 12 V 45 Ah
Place for fan	Yes

13.7. Link to the latest information

Products and software are subject to updates, you will always find the latest information on our website.

[NOVA](#)

13.8. Warranty, support, country of manufacture and country of origin

13.8.1. Support

Do you need help with installation or connection?



You will find answers to many questions at: www.milleteknik.se/support

Phone: +46 31-340 02 30

Support is open: Monday-Thursday 08:00-16:00, Fridays 08:00-15:00. Closed 11:30-13:15.

SPARE PARTS

Contacted support for questions about spare parts.

SUPPORT AFTER THE WARRANTY PERIOD

Milleteknik provides support during the life of the product, but no longer than 10 years after the date of purchase. Replacement for an equivalent product may occur if the manufacturer deems that repair is not possible. Costs for support and replacement are added after the warranty period has expired.

QUESTIONS ABOUT PRODUCT PERFORMANCE?

Contact sales: 46 31-340 02 30, e-mail: sales@milleteknik.se

13.9. Product life cycle, environmental impact and recycling

The product is designed and constructed for a long service life, which reduces the environmental impact. The product's service life depends on, among other things, environmental factors, mainly ambient temperature, unforeseen load on components such as lightning strikes, external damage, handling errors, and more. Products are recycled by being handed over to the nearest recycling station or sent back to the manufacturer. Contact your distributor for more information. Costs that arise in connection with recycling are not reimbursed.



13.10. Batteries - recommended, not included

13.10.1. Batteries are not included they are sold separately

Batteries are sold separately.

13.10.2. Battery combinations NOVA FLX L

Battery capacity (Ah)	Battery type	Number of batteries	Batteries in unit
45 Ah	45 Ah	2 pcs.	2 in Battery Backup
90 Ah	45 Ah	4 pcs	2 in Battery Backup 2 in Battery Box 1
155 Ah	45 Ah	6 pcs	2 in Battery Backup 2 in Battery Box 1 2 and Batteribox 2
180 Ah	45 Ah	8 pcs	0 in Battery Backup 2 in Battery Box 1 2 and Batteribox 2 2 and Batteribox 3





Battery capacity (Ah)	Battery type	Number of batteries	Batteries in unit
225 Ah	45 Ah	10 pieces.	2 in Battery Backup 2 in Battery Box 1 2 and Batteribox 2 2 and Batteribox 3 2 and Batteribox 4

13.10.3. 45 Ah, 12 V AGM battery

Fits in	Number of batteries
NOVA 12V 10A FLX L	2

Battery type	V	Ah
Maintenance-free AGM, lead-acid battery.	12 V	45 Ah

Table 27. 10+ Design life * battery

Article number	E-number	Article name	Terminal	Measure. Height width depth	Weight per piece	Make
MT113-12V45-01	5230546	UPLUS 12V 45Ah 10+ Design Life battery	M5 Bolt	197x165x170 mm	14.5 kg	UPLUS

*Design life is the shelf life in years for an unused battery. Environmental factors such as heat and load affect the service life. Batteries that have a durability (+10 Design Life) of 10+ years usually need to be replaced after 5-6 years.

13.10.4. Reserve operating times for different alarm classes - overview

The table shows the requirements for backup operating time and recharging of batteries for different alarm classes.



IMPORTANT

This is a guide and all times are approximate and may differ from actual times. Load, temperature and other factors come into play, which is why exact time can not be provided.

Applies to new batteries.

Amperage and batteries vary with configuration, check if the configuration can handle batteries and amperage.

Table 28. Backup operating times 12 V units - without battery box

Medium current	14 Ah 2 st 7.2 Ah batteries)	28 Ah (2 st 14 Ah batteries)	40 Ah (2 pcs 20 Ah batteries)
Loading	Backup operating time (approx.), Minutes		
1 A	485	970	1300



Medium current	14 Ah 2 st 7.2 Ah batteries)	28 Ah (2 st 14 Ah batteries)	40 Ah (2 pcs 20 Ah batteries)
2 A	380	560	810
4 A	165	330	490
6 A	120	245	360
8 A	100	210	310
10 A	80	160	240

Table 29. Backup operating times 24 V units - with battery box, 90 Ah - 155 Ah

Medium current	90 Ah	110 Ah	135 Ah	155 Ah
-	4 batteries (45 Ah)	6 batteries (20 Ah + 45 Ah)	6 batteries (45 Ah)	8 batteries (20 Ah + 45 Ah)
Loading	Backup operating time (approx.), Minutes			
0.5 A	4705	5796	7056	8215
1 A	2928	3582	4392	5070
2 A	1836	2247	2754	3230
4 A	1183	1438	1762	2018
6 A	788	959	1175	1345
8 A	748	861	1048	1150
10 A	570	689	839	920
12 A	499	603	699	765
14 A	427	516	629	655
16 A	404	499	592	590
18 A	359	444	526	520
20 A	340	420	498	495

Subject to typos.

14. ADDRESS AND CONTACT DETAILS

Milleteknik AB
 Ögärdesvägen 8 B
 S-433 30 Partille
 Sweden
 +46 31 340 02 30
 info@milleteknik.se
 www.milleteknik.com