



Power Supply

EN

BT-15 FLX Large COM Gen2, BT-25 FLX Large COM Gen2



350-257

Publication date 2025-11-06

Table of Contents

Revisions and the edition of this document	5
Symbols	5
Installation — general information	6
Requirements for main switch, fuse and cable area	6
You can find manuals at: www.milleteknik.se/rco-dokument	7
Links to manuals and product sheets	7
Address and contact details	7
Component overviews	8
Component overview BT FLX Large COM Gen2	8
Optional cards for power supply	9
Enclosures	9
Console	9
Mounting	9
Mounting - wall mounting	10
Batteries - placement and connection	10
Connecting batteries in FLX M	10
Connection of batteries in FLX S, FLX M and FLX L	11
PRO2 V3	11
PCB description of PRO2v3	11
Fuses	13
Connect the mains to the motherboard (PCB)	13
Connect load	14
Connection of load 15 A - 25 A units	14
Alarm via communication	15
Communication to a parent system	15
Configuration of communication via RS-485	15
Dip switch 1-8	16
Reboot to confirm changes in address, battery and alarm settings to parent system	18
Multiple units into one parent system	18
Bridge of UC-50 Gen2	19
Bus communication - connection to UC-50 Gen2	20
Card description BT FUSE 5	22
Connections from battery backup to BT FUSE 10	23
Connections - Battery backup and option card	23
Connect BT FUSE 10 for motherboards: PRO2 v3 15 A and 25 A	24
Connection of load on BT FUSE 10	25
Commissioning - how to start the unit	25
Connect in this order	25
Commissioning when connected to UC-50	26
System test	26
Recovery	27
Alarm displayed on cabinet door	27
Adjustment of tamper switch	28
Maintenance	28
About batteries	29
battery change	29

Battery recycling	30
Safety Information - Service and Troubleshooting	30
Troubleshooting	30
Power supply - product sheet	31
SSF1014 certified battery backup with communication	31
Name, article number and e-number	31
About BT FLX COM Gen2	31
Area of use	32
Regulations and certifications	32
Standards that product (s) meet and are approved for	32
Requirements that the product meets	32
Power outlet per product	33
Circuit boards - Technical data	33
Technical data, motherboard: PRO 2 V3	33
Technical data, alarm cards for PRO 2 and PRO2 V3	35
Technical data - 2+2 Output module	36
Technical data - BT FUSE 10	36
Power supply	37
Power supply - Technical Data RSP-320-24	37
Power supply - Technical Data HRP-600-24	38
Technical data enclosures	38
Enclosures - Technical Data FLX L	38
Warranty, support, country of manufacture and country of origin	38
Warranty 5 years	38
Support	39
Country of manufacture	39
Designed and produced by: Milleteknik AB	39
Batteries - recommended, not included	39
Batteries are not included they are sold separately	39
Battery combinations BT FLX Large COM Gen2	39
45 Ah, 12 V AGM battery	40
Technical data - BT FUSE 10	40
Connection of battery box	41
Mounting battery box with battery backup	41
Installation of battery box, what to do in battery backup	41
Connection to batterybox	42
Tamper switch when using battery box(-es)	43
Address and contact details	43

REVISIONS AND THE EDITION OF THIS DOCUMENT

The current and most recently published edition of this document is available at www.rco.se.

Audit log can be requested, see contact information for address or e-mail address.









The validity of this document can not be guaranteed, as new editions are published without prior notice.

Instructions for use in Swedish in original.¹

Instructions for use, technical data and translations thereof may contain errors. It is always the responsibility of the installer to install the product in a safe manner.

SYMBOLS

Table 1. Symbol Explanation

Symbols	Denomination	Explanation
	Warning	Risk of electric shock, improper installation or hot surfaces. Appears in some manuals
	Note	Used for supplementary information that clarifies the text.
	Caution/Important	Indicates the risk of equipment damage or malfunction. Also used for information that is important but not security-related
	Tips	Displays practical advice or shortcuts for installation, operation, or service.
	CE marking	The product complies with applicable EU directives and harmonised standards.
	Read the manual	Please read manual before installation and service.
	Do not dispose of in household waste	The product is covered by the WEEE Directive and must not be disposed of with household waste, it must be recycled and delivered to a recycling centre.
	Recycling	Packaging, products and other materials that do not contain electronics must be recycled in accordance with local environmental regulations.

¹Translations in languages other than Swedish are indicative only and not safely reviewed. Translation should always be checked against the Swedish original to ensure accurate information



READ THIS FIRST!

Electronics, regardless of enclosure, are intended for use in a controlled indoor environment. Mains voltage should be disconnected during installation.

It is the installer's responsibility that the system is suitable for its intended use. Only authorized persons should install and maintain the system.

All information subject to change.



ABOUT GLASS TUBE FUSES ON CERTIFIED DEVICES

There are glass tube fuses on the circuit board's load outputs, these have a tripping time of approx. 150 ms. In the event that a glass tube fuse trips on ONE load output, the voltage on ALL load outputs drops to 0 V for 150 ms.

The installer is responsible for ensuring that there is an energy buffer of at least 150 ms in systems that the battery backup supplies power to or accepts a power failure of 150 ms.

INSTALLATION — GENERAL INFORMATION

Installation shall be carried out by a competent electrician in accordance with the applicable national electrical installation rules.

The product is of protection class I and must be connected to a grounded 230 V AC circuit.

- A main switch according to IEC 60947-1 shall be provided in the fixed installation. The switch should be easily accessible and clearly marked with its function.
- The area of the supply cable shall be at least 1,0 mm² and fitted with a fuse T 2,5 A (slow-blown) or equivalent.
- AC and low voltage cables must not be pulled together. Keep separate cable chutes or bundles
- Check that protective earth (PE) is properly connected before turning on voltage.
- Ensure free air circulation around the enclosure at least 100 mm, unless otherwise specified. Ventilation openings must not be covered.
- The product is intended for indoor installation in normal environment (pollution number 2 and indoor class 1).

These general requirements apply to all Milleteknik products with 230 V mains connection.

REQUIREMENTS FOR MAIN SWITCH, FUSE AND CABLE AREA

In order to comply with applicable electrical safety requirements, the installation shall be equipped with a main switch according to IEC 60947-1.

Table 2. Main switch and fuse

Component	Requirements
Main switch	A main switch according to IEC 60947-1 shall be included in the installation and be easily accessible. Separated phase (F) and neutral (N)
Fuse	The supply circuit shall be protected by a fuse or automatic fuse with rated current according to the product specification (normally T 2,5 A slow-blown or equivalent). Refer to the device's nameplate.
Fuses	Approved type according to IEC 60127.
Cross-sectional area (230 V)	At least 1,0 mm ²
Cable length	In the case of longer wiring, voltage drops should be taken into account so that the operating voltage does not fall below 230 V \pm 10% at the unit.
Strain relief	All cables must be properly secured and strain relief checked before energizing the unit.

These requirements apply to all Milleteknik products with 230 V mains connection.

The table below shows recommended cable area for low current installations at different voltages, current strengths and cable lengths. Values are based on copper cable and a maximum voltage drop of approximately 3% to ensure operational reliability.

Table 3. Cable area weak current

V	Current strength (A)	Cable length 10 meters	Cable length 30 meters	Cable length 60 meters	Cable length 100 meters
24V	1 A	0,75 mm ²	0,75 mm ²	1,5 mm ²	1,5 mm ²
24V	3A	0,75 mm ²	0,75 mm ²	1,5 mm ²	2,5 mm ²
24V	5A	0,75 mm ²	1,5 mm ²	2,5 mm ²	4 mm ²
24V	10A	1,5 mm ²	2,5 mm ²	6 mm ²	-*
24V	15A	1,5 mm ²	4 mm ²	-*	-*
24V	25A	2,5 mm ²	6 mm ²	-*	-*
24V	40A	4,0 mm ²	-*	-*	-*

* Cable area would exceed connector terminal dimensions therefore it is not possible to use cable larger than 6 mm^{1 2}

YOU CAN FIND MANUALS AT: WWW.MILLETEKNIK.SE/RCO-DOKUMENT

LINKS TO MANUALS AND PRODUCT SHEETS

You will find manuals and product sheets at: www.milleteknik.se/rco-dokument



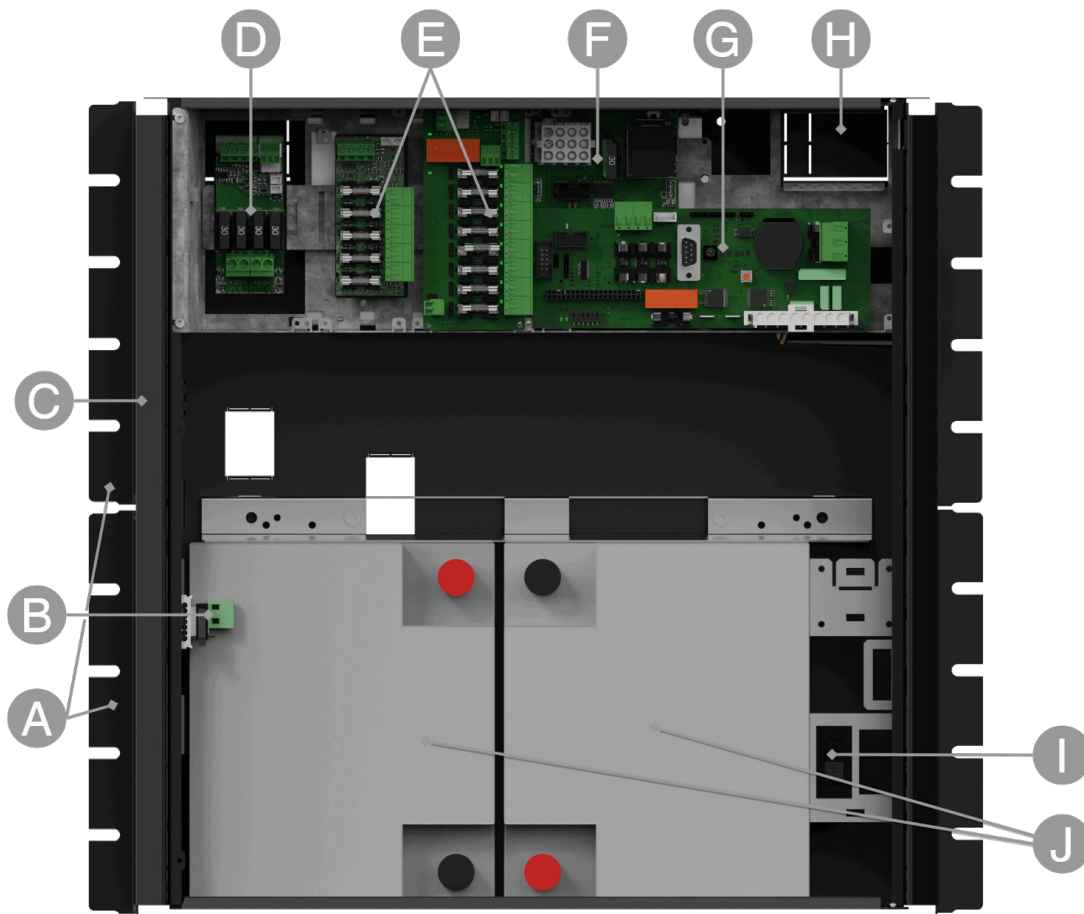
ADDRESS AND CONTACT DETAILS

RCO Security AB
Box 3130
S-169 03 Solna

Sweden
 +46 8-546 560 00
 info@rco.se
 www.rco.se

COMPONENT OVERVIEWS

COMPONENT OVERVIEW BT FLX LARGE COM GEN2



Batteries should be placed as in the picture.

Table 4. Component overview

Letter	Explanation
A	Bracket, reversible for wall mounting or 19 "rack.
B	Tamper switch. If alarm class 3 (SSF) is to be met, the tamper contact must be on the wall.
C	Cabinet in powder-coated sheet metal.
D	Load card - load is connected here.
E	Space for mounting optional cards
F	Power card - in units 15 A and 25 A.
G	Motherboard, (varies with configuration).
H	Cable entries.

Power supply

Letter	Explanation
I	Battery fuse.
J	Space for batteries.



CAUTION

For 15 A and 25 A units, loads may not be connected to the motherboard but must be connected to the power board or to the option board.

OPTIONAL CARDS FOR POWER SUPPLY

Table 5. Optional cards for power supply

Power supply	Optional cards fitted on delivery	Additional cards that can be mounted
BT-15 FLX Large COM Gen2	1 pc. BT-Fuse 10.	1 pc. BT-Fuse 5 or 1 pc. BT-Fuse 10.
BT-25 FLX Large COM Gen2	2 pcs. BT-Fuse 10.	-

ENCLOSURES

CONSOLE

The supplied brackets can be attached in two ways: When mounting on a wall, the brackets must sit backwards, against the wall. When mounting in a 19" rack, the bracket must sit at the front of the unit.

Table 6. Console

Letter	Explanation
A	Console is pushed in from the bottom up. Slide the top bracket in first.
B	Clip clicks in when bracket is pushed in correctly.



IMPORTANT

If alarm class 3 (SSF) is to be met, the cabinet and tamper switch must be mounted on the wall. Optional, Cabinet tamper M/L to put a tamper switch on the wall is available.

MOUNTING

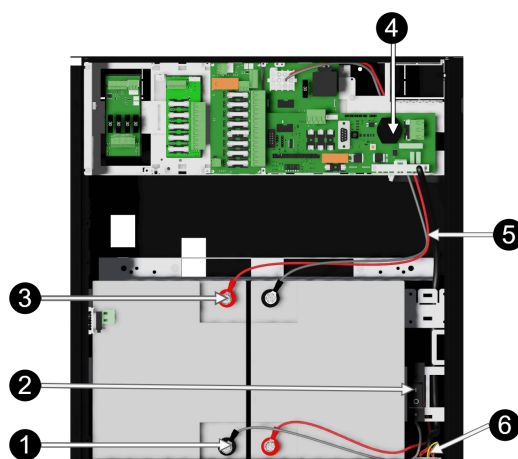
Use the appropriate screw for mounting on a wall or in a 19" rack. Screws for mounting on a wall or in a rack are not included.

MOUNTING - WALL MOUNTING

- The products shall be mounted on a stable wall or mounting plate with sufficient bearing capacity for the weight of the enclosure, including batteries.
- The enclosure is mounted vertically.
- Use four screws with a diameter of 4—5 mm, depending on the substrate.
- Recommended distance between screw head and wall should be 1.5-2 mm.
- For mounting on drywall, wall anchors or expanders should be used.
- When mounting on concrete or brick, dowels or equivalent fastening are used.
- For good ventilation, at least 100 mm of free space should be provided above and on the sides of the enclosure.
- The unit should be mounted at a comfortable working height, normally between 1.4 and 1.8 m above the floor.
- Avoid placement in direct sunlight, near heat sources, or in environments with high humidity or dust.
- For outdoor use, only enclosures with the specified IP class for outdoor use shall be used.
- Installation shall be carried out in accordance with the applicable installation rules and by a competent installer.

BATTERIES - PLACEMENT AND CONNECTION

CONNECTING BATTERIES IN FLX M



Note that cards (4) differ from different configurations.

Figure 1. Connection of batteries in FLX M. Motherboards may differ depending on the configuration, but connection of batteries takes place in the same way.

Table 7. Connecting batteries.

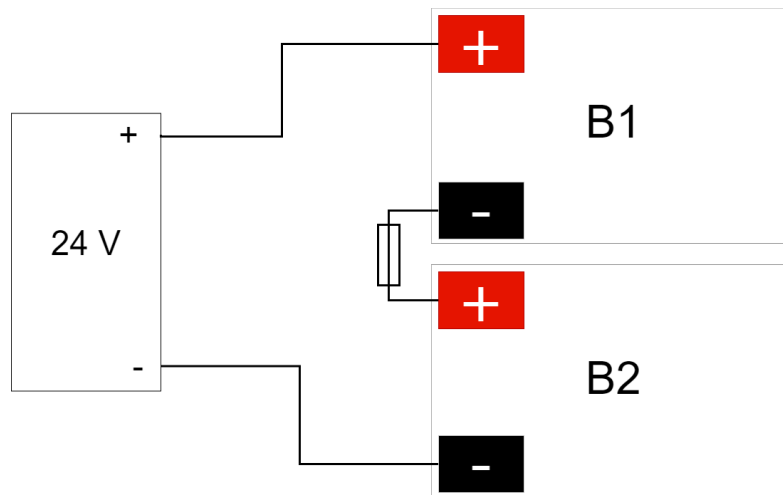
No	Explanation
1	Minus coil for battery cable from 4.
2	Fuse.
3	Plus terminal for battery cable from 4.
4	Motherboard, varies with configuration.

No	Explanation
5	Battery cables are located on the system board.
6	Connection for connection of battery box.

CONNECTION OF BATTERIES IN FLX S, FLX M AND FLX L

Battery wiring is mounted on the circuit board upon delivery. Pictures below only show how to connect wiring.

1. Place the batteries in the cabinet with the battery terminals facing outwards.
 2. Connect the battery cable. Red cable on + and black cable on -.
- If possible, disconnect mains voltage when replacing the battery.



Connect the terminals correctly so that you do not damage the equipment.

Figure 2. Wiring diagram for batteries in battery backup

PRO2 V3

PCB DESCRIPTION OF PRO2V3

The motherboard controls the device, distributes power and communicates with other systems. See technical data for more information.

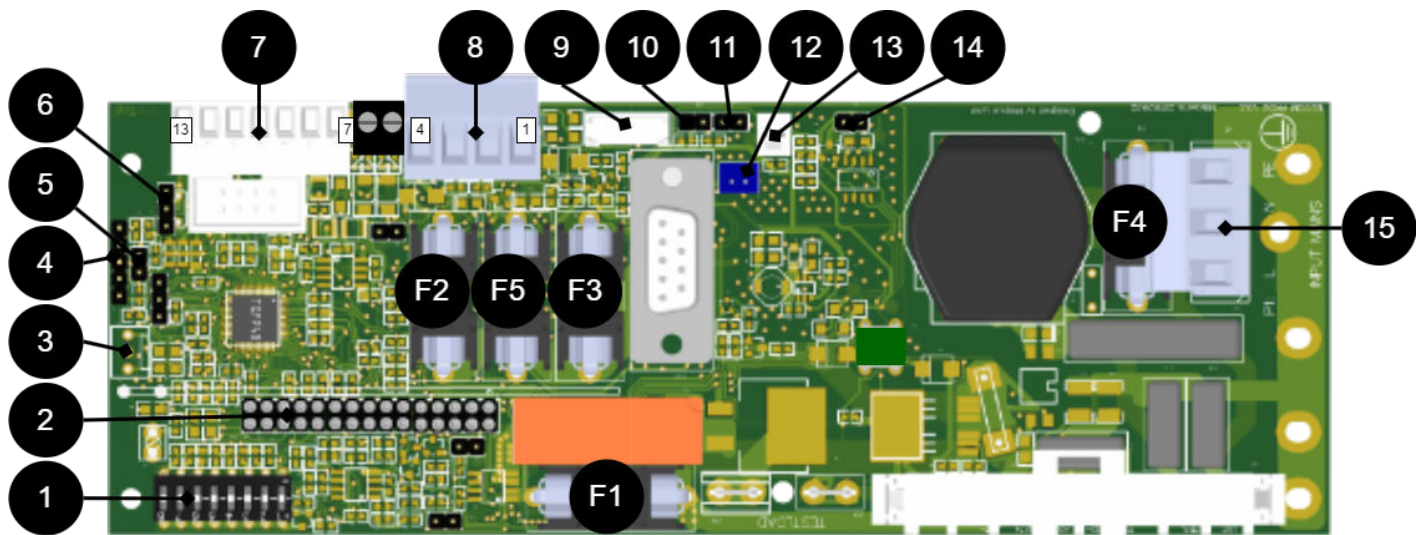


Figure 3. PRO2 v3

Table 8. Circuit board overview, explanation

No .	On circuit board	Explanation
1	Dip SW	Dip switch 1-8
2	J20	Connection relay board.
3	JU17	Connection external indicator diode.
4	-	Programming contact.
5	J13	Reset of data after battery replacement.
6	J6	Temperature sensor.
7	P2:7-13	Connection communication
	7-8	I ² c
	9-10	PE
	11	SDA
	12	SCL
	13	+5V
8	P2:1-4	Load outputs.
	1	+
	2	-
	3	+
	4	-
9	J29	Connection to fan.
10	J14	Tamper switch connection.
11	J3	Connection tamper switch from battery box.
12	J1	Connection option card.
13	J4	Connection external fuse (NO).
14	J7/21	Connection to external fuse (NC).
15	P1:1-3	Incoming mains, (230 V). L, N, PE.

FUSES

Table 9. Fuses on PRO2 / PRO2 V3

Fuse	Type	Explanation
F1	T16A	Mains fuse
F2	T250m	Load fuse 2 + (for P2: 4)
F3	T250mA	Reading protection 1 + (for P2: 1)
F4	T4A	Mains fuse.
F5	T16A	Load fuse 1+ (for P2: 2)



WARNING FOR REPLACING FUSES (CURRENT STRENGTH, A)

There is a risk of damage if the fuse is changed to a larger one than what the unit is delivered with. The function of the fuse is to protect the connected load and cables against damage and fire. It is not possible to change the fuse to a larger one to increase the power output.

CONNECT THE MAINS TO THE MOTHERBOARD (PCB)

CONNECT MAINS

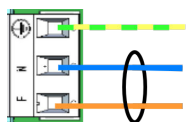
Pull wiring through the cable entry on the cabinet.

Secure F and N with cable ties.



IMPORTANT

Mains wiring must be kept separate from other wiring to avoid EMC interference.



Connect the mains cable to the terminal before it is put back on the motherboard. Secure F and N with cable ties for electrical safety.

Figure 4. Connect the mains to the motherboard

Table 10. Electrical network connections

Letter	Explanation
F	Fas
N	Neutral
PE	



ELECTRICAL MAINS CONNECTION 230 V AC ON CIRCUIT BOARD

Check that the marking on the circuit board matches the cable arrangement on the terminal block.

CONNECT LOAD



MAX CURRENT

The maximum current must not be exceeded. Max current is indicated on [nameplate](#) on the device.



LOAD OUTPUTS WHEN SSF CERTIFIED

In order for certificates to be maintained, only one load output must be used.

If there are one or more connection cards (to increase the number of load outputs), load must be connected there and not on the main board.

Table 11. Load connections

On circuit boards	Explanation
P2: 1	Connection for load 1 +.
P2: 2	Hookup for load 1 -.
P2: 3	Connection for load 2 +.
P2: 4	Connection for load 2 -.



CAUTION

Load may only be connected to the motherboard in 5 A and 10 A units. For other units, load must be connected via power board or option board.

CONNECTION OF LOAD 15 A - 25 A UNITS

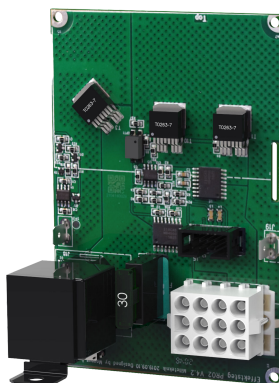
For units with a effect card, which is available to handle the higher currents (15 ampere and above), the load must be connected on an optional board.

See documentation for option board for how to connect load.



WARNING

Load must not be connected to the motherboard if the device is a 15 A or 25 A, as it will be destroyed during commissioning. Motherboards that are faulty due to incorrect connections are not covered by warranty.



The effect card increases the current for 15 A and 25 A units.

Figure 5. Effect card

ALARM VIA COMMUNICATION

Connection of communication to the parent system takes place via JU6. See the parent system documentation for more information.

COMMUNICATION TO A PARENT SYSTEM

It is possible to connect communication to a superior system via connections on P2. See also the parent system's documentation for compatible protocol. See technical data for more information on alarms.

Table 12. Connections over communication

Terminal block	Explanation
P2: 7	RS-485 -
P2: 8	RS-485 +
P2: 9	System minus -
P2: 10	System-minus -
P2: 11	RXD
P2: 12	TXD
P2: 13	+5 V

CONFIGURATION OF COMMUNICATION VIA RS-485

Communication via RS-485 is connected to P2: 7- & P2: 8+.

The address is set binary on the switch.

ADDRESS configuration:

Table 13. S1 Dip switch

Dip switch	Value
Dip switch 1=	1
Dip switch 2=	2
Dip switch 3=	4
Dip switch 4=	8

DIP SWITCH 1-8

Dip-Switch has several different modes:

Table 14. Dip switch 1-8

Dip switch	In mains operation or in battery operation
1	Address for external communication.
2	Address for external communication
3	Address for external communication
4	Address for external communication
5	Sets alarm for mains failure delay
6	Sets alarm for mains failure delay
7	Sets alarm limit for low battery voltage in battery operation.
8	Turns off or turns on LED indication, for everything except alarm in case of triggered tamper contact which is always indicated regardless of dip-switch position.
8 in sequence	Perform battery tests.

ADDRESS SETTING FOR EXTERNAL COMMUNICATION (DIP SWITCH 1-4)

Dip-Switch S1: 1-4 sets addressing.

Table 15. Addressing Dip-Switch 1-4

	Dip: 1	Dip: 2	Dip: 3	Dip:4
Adress 1	ON	OFF	OFF	OFF
Adress 2	OFF	ON	OFF	OFF
Adress 3	ON	ON	OFF	OFF
Adress 4	OFF	OFF	ON	OFF
Adress 5	ON	OFF	ON	OFF
Adress 6	OFF	ON	ON	OFF
Adress 7	ON	ON	ON	OFF
Adress 8	OFF	OFF	OFF	ON
Adress 9	ON	OFF	OFF	ON
Adress 10	OFF	ON	OFF	ON
Adress 11	ON	ON	OFF	ON
Adress 12	OFF	OFF	ON	ON
Adress 13	ON	OFF	ON	ON

	Dip: 1	Dip: 2	Dip: 3	Dip:4
Adress 14	OFF	ON	ON	ON
Adress 15	ON	ON	ON	ON

MAINS FAILURE DELAY (DIP 5-6)

It is possible to change the time for when the alarm for a power outage should be given. Use the matrix to set the alarm.

Table 16. Mains failure delay

Alarms for mains failure are given after:	Dip 5	Dip 6
3 seconds	OFF	OFF
30 minutes	ON	OFF
60 minutes	OFF	ON
240 minutes (4 hours)	ON	ON

LOW BATTERY VOLTAGE (DIP 7)

Dip: 7 has the same function regardless of whether the unit is in mains or battery operation or whether the tamper switch is held down.

Table 17. Low battery voltage

Alarm for low battery voltage is given when	Dip 7
22,8 V*	ON
24 V	OFF
*25% of battery capacity remains.	

LED (DIP 8)

LED/battery-test always lights up when the door is open.

Dip-switch 8=ON turns off the LED.

Dip-switch 8=OFF turns on the LED.

BATTERY TEST (DIP 8)

To do a battery test, dip 8 needs to change position and five seconds need to pass before the test is initiated.

- If dip 8 in original position is on OFF then switch dip 8 to: ON (wait 5 seconds) and then switch back to OFF.
- If dip 8 in original position is on ON then switch dip 8 to: OFF (wait 5 seconds) and then switch back to ON.

This activates the battery test after 3-8 seconds. The battery test lasts for about 6 seconds and then the LED flashes yellow quickly. Aged battery alarms may be indicated while the battery test is being performed.

Only reset dip 8 when the test is complete.

REBOOT TO CONFIRM CHANGES IN ADDRESS, BATTERY AND ALARM SETTINGS TO PARENT SYSTEM

After the dip-switch has been set for various parameters, the device's software needs to be restarted. This is for the new settings to be stored and take effect.



IMPORTANT

Rebooting according to this procedure does not interrupt the output voltage.

Restarting the device software is done by jumpering J13 (PRO2)



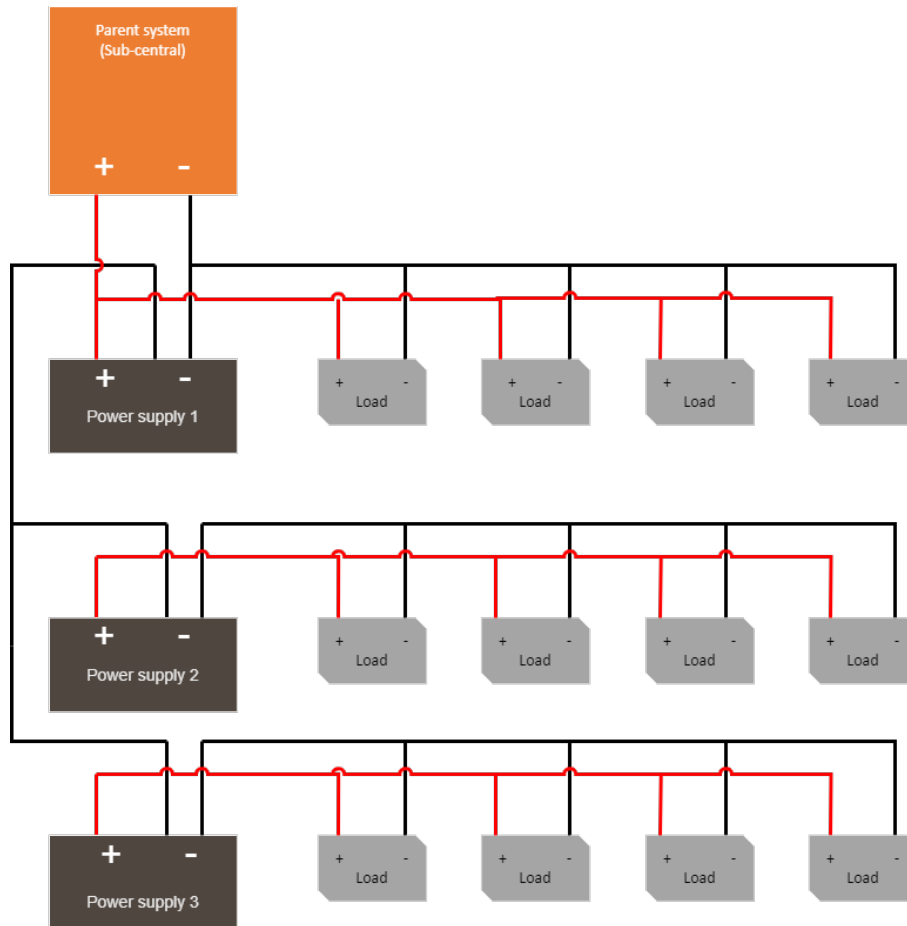
IMPORTANT

Reboot must be done every time a change is made to the device.

NEO cannot be connected to communication/UC.

MULTIPLE UNITS INTO ONE PARENT SYSTEM

To connect several units to a higher system, the load-minus between several battery backups must be connected together.



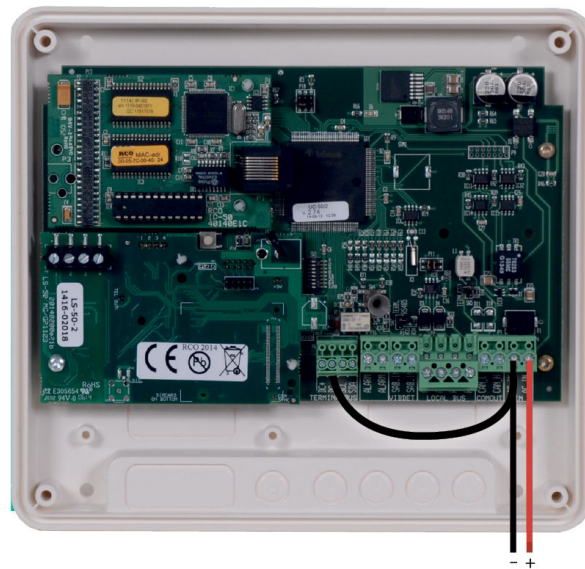
BRIDGE OF UC-50 GEN2

When installing in environments sensitive to interference, communication interruptions may occur. By bridging to 0 V on the UC-50 Gen2, interference can be avoided.



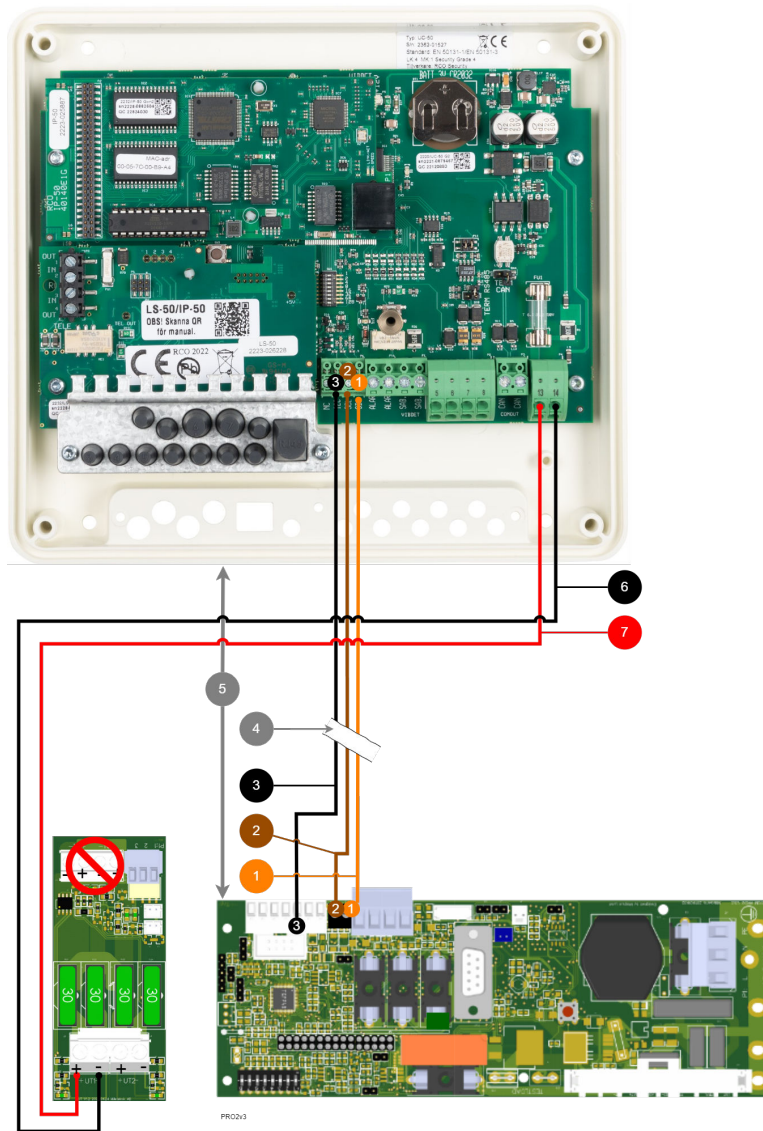
IMPORTANT

The bridge must be located: i²C, P6 to DC-IN, P6:12.



BUS COMMUNICATION - CONNECTION TO UC-50 GEN2

Connection to UC-50 Gen2 is made according to sketch.



The picture shows the connection from the battery backup to the UC-50 Gen2.

Figure 6. Connection to UC-50 Gen2

Table 18. Bus communication - connection to UC-50 Gen2.

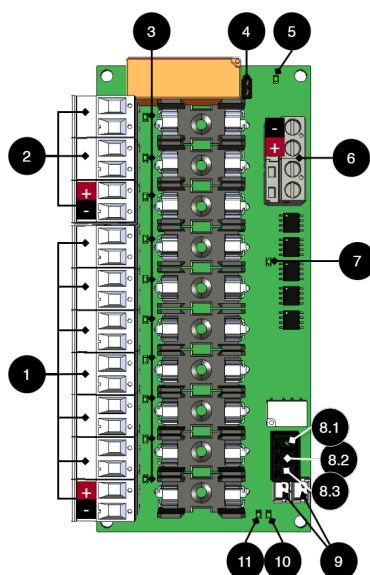
No	On PCB in UC-50 Gen2	On PCB in power supply	Color of cable	Explanation
1	SDA, P6:42	P2:5	Orange	SDA/DATA.
2	SCL, P6:41	P2:6	Brown	SCL/CLOCK.
3	I ² C 0V, P6:40	P2:4, P2:9 or P2:10	Black	V-Ground / minus. Choose any.
4	-	-	-	Untwisted cable. Maximum three meters.
5	-	-	-	Max distance between power supply and UC-50 Gen2: 3 meters.
6	DC+ IN, P4:14	+UT1	RED	24 V.
7	DC- IN, P4:14	UT1-	Black	24 V.



IMPORTANT

Cable length max 3 meters. Cable must not be twisted in pairs.

CARD DESCRIPTION BT FUSE 5



IMPORTANT

From the factory, all ten outputs are prioritized, (4 are jumpered).

Table 19. Circuit Board Overview - BT FUSE 10

No .	On circuit board	Explanation
1	P1:1-14	Priority load outputs +/- . (Odd numbers = minus, even numbers = plus). A prioritized load output always has voltage.
2	P1:15-20	Unprioritized load outputs +/- . (Odd numbers = minus, even numbers = plus). In battery operation, the load is released if 4 is not bridged. If the jumper is on 4, the load outputs are prioritized.
3	D1-D10	Green indicator diode, lights up with a solid green light when the fuse is ok.
4	JU1	Jumper to control three outputs. Factory setting is mounted jumper = all 10 outputs are activated. Without a jumper, only priority outputs (1) P1:1-14 are activated. If the jumper is removed, the outputs, 2, are controlled from 9.
5	D10	Green indicator diode, lights up with a solid green light when all outputs are activated.
6	P2:1-4	Incoming voltage from motherboard, 24 V. (1,3=+, 2,4=-).
7	D17	Indicator diode lights up orange if priority outputs are activated.
8.1	P1:3	Alarm output, NO.
8.2	P1:2	Alarm Output, Com.
8.3	P1:1	Alarm Exit, NC.
9	J11-J12	Connection of alarms to motherboard and/or bridging of alarms from another board. Use any connection to connect alarm to motherboard. If the jumper, 4, is removed, the outputs, 2, are controlled with the coupling, see connection to the board.

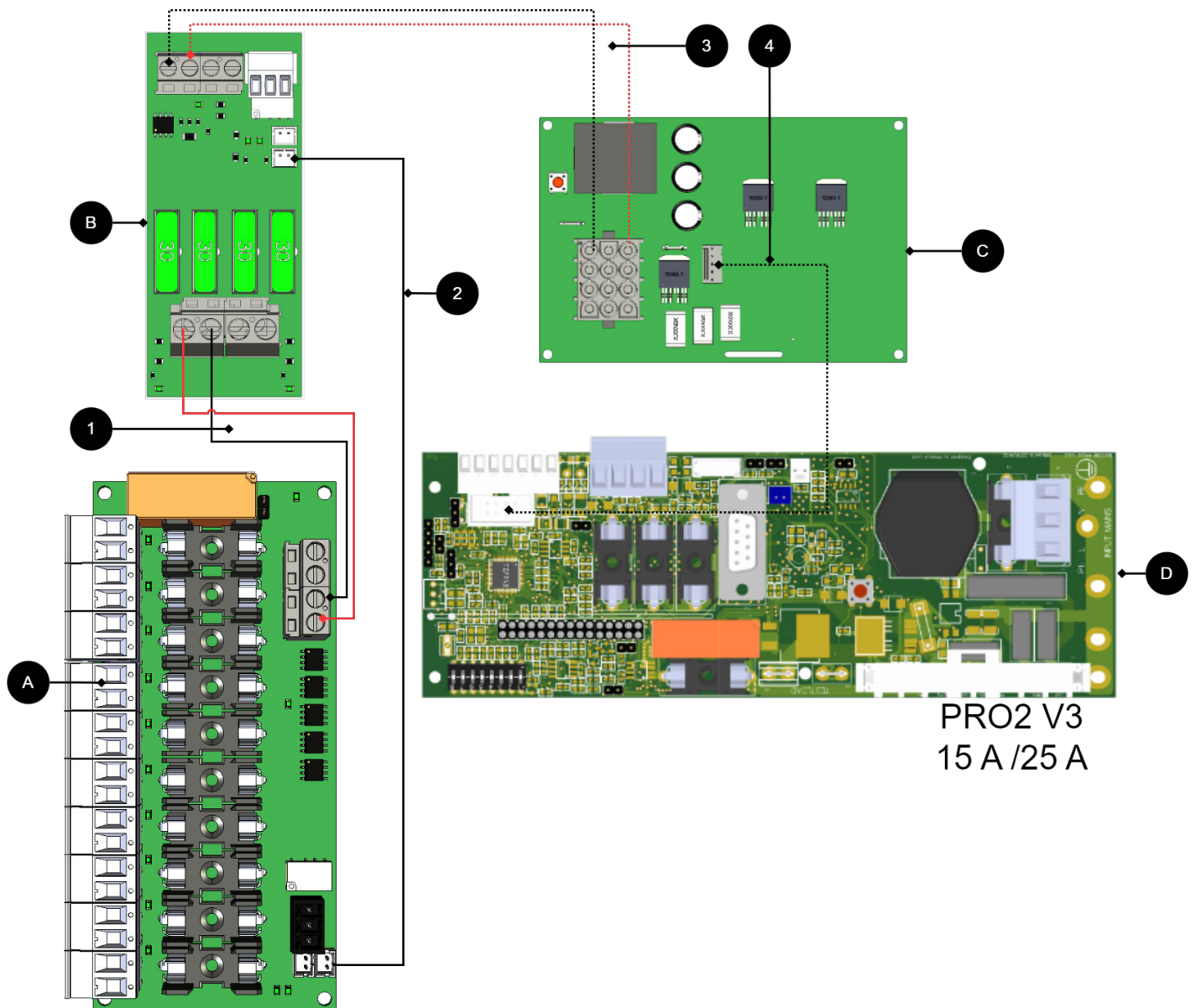
No .	On circuit board	Explanation
10	D29	Indicator diode that lights up with a solid green light when all fuses are ok.
11	D30	Indicator diode that lights up with a solid red light if any fuse is faulty.

CONNECTIONS FROM BATTERY BACKUP TO BT FUSE 10

CONNECTIONS - BATTERY BACKUP AND OPTION CARD

Main board in battery backup, connected from	Connects to optional cards
PRO1	Optional card
Alarm: J15	FUSE ALARM 2-3
Load: Load output 1	IN 12 V / 24 V
PRO2, PRO2 V3 & PRO 3	Optional card
Alarm: J7	FUSE ALARM 2-3
Load: Load output 1	IN 12 V / 24 V

CONNECT BT FUSE 10 FOR MOTHERBOARDS: PRO2 V3 15 A AND 25 A



+ and - from load on motherboard are connected to + and - on the option board.

Communication is connected between terminals as the solid line shows.

Figure 7. Connect the card as shown in the picture.



IMPORTANT

Early versions of PRO1 and PRO2 may lack white terminal (JST), which lacks a JST contact, then the alarm is connected via relay switching. P3:1-3. [If the card lacks a white \(JST\) contact or if the alarm is to be given via relay switching](#)

Table 20. Connections 15 A and 25 A units

No/letter	On circuit board	Explanation
A	10 Output modules	Optional card.
B	2 Output module	Card for connection of load and power supply to 10 Output module.
C	Effect card	Available in 15 A and 25 A units.
D	PRO2 v3	Motherboard in battery backup.
1	P2:3-4	Connect power supply from 2 Output module (B) to 10 Output Module (A)
2	J11	Alarm output, connects to load card.
3,4	-	Internal power supply between cards.

CONNECTION OF LOAD ON BT FUSE 10



WARNING

Maximum load is 10A per load output, and the card's total load must not exceed 16 A.

1. Connect load wiring to P1:1-20 on fuse module for load.
2. Alarm is connected to P3:1-3.

Only then can battery backup be put into operation.

COMMISSIONING - HOW TO START THE UNIT

1. connect load, alarm and possibly. other connections.
2. Connect batteries
 - Connect / switch on fuses
3. Screw the mains cable into the terminal block and attach the terminal block to the motherboard.
 - Switch on mains voltage.

CONNECT IN THIS ORDER

To minimize the risk of errors that may occur in connection with a short circuit, connections to the motherboard must be made in this order.



IMPORTANT

For setting dip switches and addressing — see online manual via QR code.

The unit works normally when the indicator LED on the outside of the cabinet door lights up with a solid green light. See front panel for other status indications.

It may take up to 72 hours before the batteries are fully charged.



IMPORTANT

Important information - Disclaimer for test scenarios outside normal operation

Please note: The product is designed for normal operation according to the specified application area and is equipped with protective components such as PTC (e.g. PTC2 on RS-485 port, 0.2A/30V) to protect against overload. PTC protection is self-restoring and limits current in the event of failure, meaning that attempts to draw power from ground connections outside intended limits may result

During deployment, there have been test scenarios where minus wires on load boards are deliberately broken to check alarm function, while communication interfaces (RS232/RS485) are connected. Such actions may lead to the negative supply of the load inadvertently passing through the ground of the communication cable (e.g. via RS232), which is not an intended mode of use

We disclaim liability for damage or failure arising from use or testing outside specified operating conditions, including manipulation of load supply or communication interfaces in ways not described in this manual.

To avoid this, the following is recommended:

- Do not conduct tests in which minus supply on cargo boards is broken while communications are connected.
- In case of intentional test: Break the 24V voltage on the plus side, not on the minus side.
- For future installations, extra protective measures, such as PTC or fuses on communications ground (e.g. Millekontakters soil)
- Always follow the installation and commissioning instructions according to the manual.

COMMISSIONING WHEN CONNECTED TO UC-50

Commission in this order when simultaneously connected to the UC-50

1. Connecting and energizing the batteries.
2. Connect to mains.
3. Connect the alarm system according to [connection UC50 \[20\]](#).

The unit works normally when the LED on the outside of the cabinet door lights up with a solid green light. See front panel for other status indications.

SYSTEM TEST

Test the connected device by performing a system test afterwards [commissioning \[25\]](#).



IMPORTANT

Let the batteries charge for a couple of hours, use a multimeter to measure the voltage on each battery. The voltage must be at least 12.7 V per battery.

- Switch on incoming mains voltage.
- Indicator LED on the outside of the cabinet door lights up with a solid green light. Disconnect the mains voltage to check that the unit is operating in battery mode and alarms.
- LED on the cabinet door indicates, see panel for alarm type.
- Switch on incoming mains voltage. Indicator LED, on the outside of the cabinet door, lights up with a solid green light. Normal operation.

RECOVERY

Reset the unit by completely de-energizing the unit.

Disconnect battery wiring and mains voltage and reconnect after 5 seconds.

ALARM DISPLAYED ON CABINET DOOR

In normal mode, the indicator LED shows a solid green light.

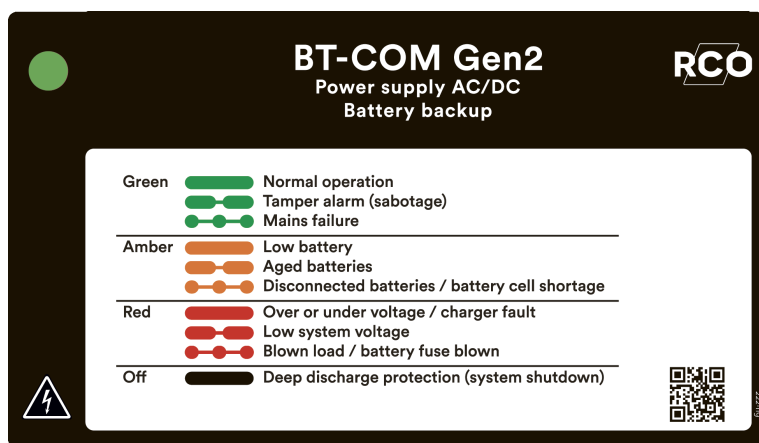


Table 21. The indicator diode shows.

The indicator diode (LED) shows	Explanation
Solid green light	Normal operation.
Slow green flashes	Sabotage alarm.
Fast green flashes	Mains failure.
Solid yellow light	Low battery voltage.
Slow yellow flashes	Aged batteries.
Rapid yellow flashes	Disconnected batteries / battery cell shortage.
Solid red light	Overvoltage or undervoltage or charger fault.
Slow red flashes	Low system voltage.
Rapid red flashes	Blown load / battery fuse has blown.
No light / off	Deep discharge protection is activated. (System shutdown).

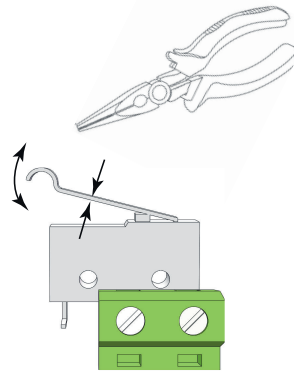
When operating system: If the indicator LED is off, deep discharge protection has come into force.



NOTICE

If the indicator light flashes every 15 seconds, the battery is fully charged and the charge is in rest phase to extend battery life. In the event of a power failure during the rest phase, the battery backup switches to battery operation as usual

ADJUSTMENT OF TAMPER SWITCH



The tamper switch lever must be in the closed position when the cabinet door is closed. If the alarm goes off ("tamper alarm"), the lever may need to be adjusted.

The lever is adjusted by the following steps:

1. Pinch with pliers in the middle of the lever.
2. Carefully adjust the lever in the desired direction (up / down).
3. Check by closing the door. A click is heard when the contact is closed.



NOTICE

Tamper switch will not give an alarm when closed and locked the door.

MAINTENANCE

The system with the exception of batteries is maintenance-free when installed in an indoor environment.

Check the fan annually. The fan should rotate smoothly without any noise. Clean the fan from dust and dirt. The fan must be replaced if it does not rotate smoothly or is so dirty that it cannot be completely cleaned. If the fan does not work well, the air flow in the unit will be obstructed, which leads to an increase in heat in

the enclosure, which can lead to a deterioration of the battery capacity and to a significantly shorter battery replacement interval.

ABOUT BATTERIES

Batteries generate electricity through a chemical process and there is thus a natural degradation of capacity. The biggest factor in battery life is temperature. The higher the temperature, the shorter the battery life. The date of manufacture stamped on the battery and the service life (as stated by the battery manufacturer). An ideal temperature is 20 °C both in operation and in storage. Higher ambient temperature greatly reduces the service life. Thus, actual lifespan varies when used. Batteries should be replaced after half specified (from the battery manufacturer) lifetime for safe operation. Batteries purchased through the manufacturer of the battery backup have a lifespan (from the battery manufacturer) of between 10-12 years with recommended replacement after 5-6 years.

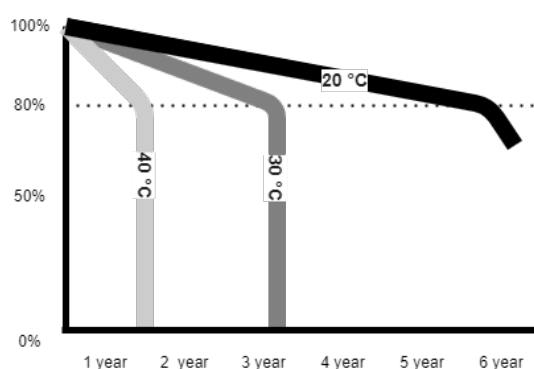


Table 22. *[sv] Tillverkarens angivna livslängd och rekommenderat batteribyte*

<i>[sv] Tillverkarens angivna livslängd^a</i>	<i>[sv] Batteri i drift bör bytas efter^b</i>
<i>[sv] 3-5 år</i>	<i>[sv] 2-3 år</i>
<i>[sv] 6-9 år</i>	<i>[sv] 3-5 år</i>
<i>[sv] 10-12 år</i>	<i>[sv] 5-7 år</i>
<i>[sv] 15+ år</i>	<i>[sv] 8-10 år</i>

^aGäller vid helt outnyttjat batteri som är lagrat under optimala förhållanden.

^bVid drift i idela omgivningstemperatur, 20 °C.

BATTERY CHANGE

- If possible, disconnect mains (voltage) when replacing the battery.
- Disconnect battery cables. Note how battery cables are mounted before removing them.
- Remove battery fuse between batteries.
- Insert and fasten the new batteries.
- Connect the battery cables in the same way as before.
- Connect battery fuse between batteries.
- Switch on mains voltage. The indicator LED may not be green (up to 72 hours), until the batteries are charged.
- Test the system by briefly disconnecting the mains voltage, (= the load is driven by the batteries), and then switch on the mains voltage again.

BATTERY RECYCLING

All batteries must be recycled. Return to manufacturer or return to recycling station.



SAFETY INFORMATION - SERVICE AND TROUBLESHOOTING

- If possible, disconnect the mains supply before starting any work, such as servicing, battery replacement, metering or troubleshooting.
- Remove the battery fuse/plug before working on the DC side.
- Check that all cables are properly connected and grounded before re-energizing the unit.
- The product may contain components that become hot during operation. Avoid touching internal parts immediately after the power has been switched off.
- If fuses disengage repeatedly see [Troubleshooting \[30\]](#) or disconnect the device and contact Milletechnik technical support.
- In case of suspicion of damage, liquid ingress or burnt odour, the product must not be used until it has been checked by competent personnel.
- During operation, the housing should be closed and locked (if the device has a lock).
- Only authorized service personnel may perform repairs on the device.
- Use only original fuses and batteries of the same type and value as specified in the manual/product sheet.

Milletechnik is not responsible for damage caused by improper handling, modification or unapproved components.

TROUBLESHOOTING

If the device does not work as expected, go through the following checks:

Table 23. Troubleshooting

Problem	Possible cause	Action
No output voltage.	No mains voltage, fuse triggered or battery failure.	Check the supply, fuses and battery connections.
Battery does not charge.	Faulty battery connection or battery fuse has blown.	Check battery cables and replace battery fuse if necessary.
The device starts but alarms.	Batteries not sufficiently charged or faulty load or battery.	Wait 72 hours until the batteries are fully charged. Ensure that the connected load does not exceed the rated current.
LED flashes.	Information, warning or error.	See panel or manual for explanation.
Fuses blow frequently.	Short circuit or overload.	Check connected devices, change the fuse only after the cause is fixed.
The device gets hot	High load or insufficient ventilation	Check that the rated current is not exceeded and that air flow is present around the housing.

If the problem persists after these checks, contact Milletechnik support and provide the product name, serial number and a brief error description.

POWER SUPPLY - PRODUCT SHEET

SSF1014 CERTIFIED BATTERY BACKUP WITH COMMUNICATION**NAME, ARTICLE NUMBER AND E-NUMBER**

Table 24. Name, article number and email number.

Name	Article number	E-number
BT15-FLX2 LARGE COM Gen2	28160157	52 577 02
BT25-FLX2 LARGE COM Gen2	28160159	52 577 03

ABOUT BT FLX COM GEN2

BT FLX COM Gen2 is mainly used in safety systems where SSF 1014 approved battery backup is required or where the requirements are higher. Requirements such as better flexibility, more alarm functions, longer backup operating times or where the battery backup needs to handle higher loads.

- SSF1014, Alarm class 1-3 approved battery backups / power supply.
- Controlled charging function.
- Qualified battery capacity test
- Can be supplemented with several different optional cards.
- Mounted on a wall or in a 19" rack.
- Flexible battery capacity with battery boxes increases backup operating time.

FLEXIBILITY

Power supply BT-5 FLX Small COM Gen 2 and BT-10 FLX Small COM Gen 2 can be expanded with an extra battery box: Battery box 24V FLX S with space for four 14 Ah batteries. Power supply BT-5 FLX Medium COM Gen 2, BT-5 FLX Large COM Gen 2, BT-10 FLX Large COM Gen 2, BT-15 FLX Large COM Gen 2 and BT-25 FLX Large COM Gen 2 can be extended by 1- 4 extra battery boxes*. Power Supply Medium and Power Supply Large can also be expanded with battery shelves in 19" racks*. Battery box Battery box 24V FLX M Has room for two 45 Ah batteries. Battery shelves have room for two 45 Ah batteries (Medium) and two 150 Ah batteries (Large) on each battery shelf*. *Adapter required.

FIXED INSTALLATION

The product is intended for fixed installation. The battery backup must be installed by a qualified installer.

AREA OF USE

BT FLX COM Gen2 mostly used for: Access control system, burglar alarms, (integrated security systems), in public environments such as schools, offices and commercial properties.



The unit meets the requirements for installation in systems that must be SSF 1014 approved. SSF 1014 certificate is only valid for certification together with a higher-level system.



IMPORTANT

In order for the SSF 1014 certificate to be valid, only one (1) load output may be used.

REGULATIONS AND CERTIFICATIONS

STANDARDS THAT PRODUCT (S) MEET AND ARE APPROVED FOR

Table 25. SBF

SBF 110:8

Table 26. SSF

SSF1014 Alarm class 1-4 (burglar alarm).

Table 27. Certificate and certificate number

Certificate number, SBSC	Designation SBSC
No. 20-117	NOVA 27 50-FLX S • NOVA 27 100-FLX S • NOVA 27 50-FLX M • NOVA 27 100-FLX M • NOVA 27 150-FLX M • NOVA 27 250-FLX M • NOVA 27 50-FLX L • NOVA 27 100-FLX L • NOVA 27 150-FLX L • NOVA 27 250-FLX L Unison Facility Cabinet

REQUIREMENTS THAT THE PRODUCT MEETS

Table 28. The product meets the following requirements.

EMC:	EMC Directive 2014 / 30EU
Electricity:	Low voltage directive: 2014/35 / EU
CE:	EC Directive in force: 765/2008
Emission	EN55032 (CISPR32) Class B

Power supply

Machinery Directive	The product is part of electrical systems, is subject to the relevant electrical and safety directives and is not a machine according to the Machinery Directive (2006/42/EC).
Ecodesign	Milleteknik's products are intended for professional use and are therefore not directly covered by the Ecodesign Regulation (EU 2019/1782). As some components may be covered, we nevertheless disclose relevant information to give our customers confidence in their choice

Efficiency (%)^a

Standby consumption, typical (W):

^a.At rated load.



POWER OUTLET PER PRODUCT

Article name:	Battery capacity:	Possible average load according to LK1 / LK2:	Possible average load according to LK3 / LK4:
BT-5 FLX Small COM Gen2 + Batteribox 24V FLX S	6 pcs 14 Ah (42 Ah)	3.4 A	1.4 A
BT-15 FLX Large COM Gen2	2x 45 Ah	3.6 A	1.4 A
BT-15 FLX Large COM Gen2 + 1 pc. Battery box 24V FLX M	4 pcs 45 Ah (90 Ah)	7.3 A	2.9 A
BT-15 FLX Large COM Gen2 + 2 pcs. Battery box 24V FLX M	6 pcs 45 Ah (135 Ah)	11.1 A	4.4 A
BT-15 FLX Large COM Gen2 + 3 pcs. Battery box 24V FLX M	8 pcs 45 Ah (180 Ah)	14.8 A	5.9 A
BT-25 FLX Large COM Gen2	2 pcs. 45 Ah	3.6 A	1.4 A
BT-25 FLX Large COM Gen2 + 1 pc. Battery box 24V FLX M	4 pcs 45 Ah (90 Ah)	7.3 A	2.9 A
BT-25 FLX Large COM Gen2 + 2 pcs. Battery box 24V FLX M	6 pcs 45 Ah (135 Ah)	11.1 A	4.5 A
BT-25 FLX Large COM Gen2 + 3 pcs. Battery box 24V FLX M	8 pcs 45 Ah (180 Ah)	14.8 A	5.9 A
BT-25 FLX Large COM Gen2 + 4 pcs. Battery box 24V FLX M	10 pieces. 45 Ah (225Ah)	18,6 A	7,4 A

CIRCUIT BOARDS - TECHNICAL DATA

TECHNICAL DATA, MOTHERBOARD: PRO 2 V3

Info	Explanation
Short name:	PRO 2 V3
Product description	Motherboard in battery backup with advanced functions and communication to parent system.
Own consumption, with relay card	Less than 210 mA. 100 mA without power stage with all relays retracted on external alarm card in normal mode.
Switching time from mains voltage to battery operation	When batteries are idle: <5 microseconds. When batteries are in charge cycle: 0 (none). Batteries rest for 20-day cycles, after which a charging cycle picks up and charges the batteries for 72 hours. If there is a power failure when batteries are in the charge cycle, there is no switching time.
Incoming electricity network	230 V AC -240 V AC, 47-63 Hz.
Fuse on mains	See table: Fuses.

Info	Explanation
Indication	Indicator diode on circuit board / cabinet door

ALARM

Alarm displayed on indicator LED on the front of the cabinet.

- Cell fault in battery or unconnected battery.
- Charger fault, undervoltage.
- Charger fault, overvoltage.
- Low system voltage, system voltage below 24.0 V in mains operation.
- Low battery voltage, below 24.0 V DC in case of mains failure.
- Power failure alarm.
- Sabotage switch.
- Fuse fault.
- Aged battery

Expanding alarm functions are available via communication or with alarm cards.

Table 29. Outputs

Info	Explanation
Alarm on alternating relay? (Yes No)	Yes
Alarm output protocol (communication protocol)	RS-485 and I ² C
Load outputs, number	2
Voltage at load output	27.3 V DC
Voltage limit, upper, on load output	27.9 V DC
Voltage limit, lower, on load output. For battery operation and disconnected mains voltage.	20 V DC
Priority (always voltage) load outputs (Yes / No)	-
Maximum load, per output	10 A
Maximum load, total, (must not be exceeded).	10 A
Load output plus (+) secured? (Yes No)	-
Load output minus (-) secured (Yes / No)	-
Fuses on output	Yes, see table: Fuses.
Connection to buzzer? (Yes No)	-

Table 30. Fuses

Fuses	Type
1.5 A	F1.5A
3 A	T3A
5 A	T5A
10 A	T10A
15 A	T15A
25 A	T25A
Power supply fuse of 12V one	T2.5AH250V. Ceramic.
Mains fuse for 24 V units up to 15 A	T2.5AH250V. Ceramic.
Mains fuse for 24 v units over to 15 A	T4AH250V. Ceramic.

Table 31. Protection

Info	Explanation
Deep discharge protection (Yes / No)	Yes. 12 V units protection at 10V, +/- 0.5 V. 24 V units protection at 20, +/- 0.5 V.
Surge protection (Yes / No)	Yes
Overtemperature protection (Yes / No)	Yes
Short circuit protected = (Yes / No)	Yes

TECHNICAL DATA, ALARM CARDS FOR PRO 2 AND PRO2 V3

Info	Explanation
Card name:	PRO2 larmkort
Version:	2.0
Product description	Alarm card for PRO2 and PRO2 V3 with alarm on alternating relay. All relays are normally energized and give an alarm in a voltage-free position.
self-consumption	40 mA

Manufactured in Milleteknik's factory in Partille, Sweden.

This translation is not verified and should be cross referenced with the swedish original before use.

Table 32. Alarm overview

Alarm overview in alphabetical order	Relay 1 * / Alarm output 1	Relay 2 * / Alarm output 2	Relay 3 * / Alarm output 3	Relay 4 * / Alarm output 4	Communication (P1: 1-12)	Indicator LED on motherboard and LED on door.
Network outages	X	-	-	-	X	X
Fuse fault	-	X	-	-	X	X
Sabotage switch	-	-	-	X	X	X
Fan fault	-	-	-	-	X	-
Charger fault, overvoltage	-	X	-	-	X	X
Charger fault, undervoltage	-	X	-	-	X	X
Cell fault or unconnected battery	-	X	-	-	X	X
Low system voltage. **	-	-	X	-	X	X
Low battery voltage (<24.0 V DC) or power failure	-	X	-	-	X	X
Overtemperature	-	-	-	-	X	-
Undertemperature	-	-	-	-	X	-
Undertemperature	-	-	-	-	X	-
Short battery life left	-	-	-	-	X	-
Aged battery	-	X	-	-	X	X
Overcurrent 100%, minute average	-	-	-	-	X	-
Overcurrent 80%, daily average	-	-	-	-	X	-
Overcurrent 175%, second average	-	-	-	-	X	-

* Alarm on potential-free relay contact.

** System voltage in mains operation is below 24.0 V.

TECHNICAL DATA - 2+2 OUTPUT MODULE

Info	Explanation
Short name:	2+2 Output module
Product description	2+2 Output module is a hedging module with four fully secured outputs, two of which are prioritized and two are non-prioritized.
The product fits in	Battery backups with motherboards: PRO1, PRO2, PRO2 V3, PRO3 and NEO3.
Measure	85 x 37 mm
Own consumption	35 mA
Tension	24 V
Fuses	On exits.
Indication	Yes, LED on circuit board

Table 33. Outputs

Info	Explanation
Alarm outputs, number	1
Alarm on alternating relay? (Yes No)	Yes, sum alarm in case of fuse fault
Alarm output protocol (communication protocol)	-
Load outputs, number, (of which priority).	4 (2)
Voltage at load output	27.3 V DC
Voltage limit, upper, on load output	27.9 V DC
Voltage limit, lower, on load output. For battery operation and disconnected mains voltage.	20 V DC
Priority (always voltage) load outputs (Yes / No)	Yes
Maximum load, per output	5 A
Maximum load, total, (must not be exceeded).	10 A
Load output plus (+) secured? (Yes No)	Yes
Load output minus (-) secured (Yes / No)	No
Fuses on output	F2A
Connection to buzzer? (Yes No)	No

The article number of the manual

Manufactured in Milleteknik's factory in Partille, Sweden.

This translation is not verified and should be cross referenced with the swedish original before use.

TECHNICAL DATA - BT FUSE 10

Info	Explanation
Short name:	BT FUSE 10
Product description	BT FUSE 10 is a hedging module with 10 fully secured outputs, of which seven are prioritized and three are non-prioritized.
The product fits in	Battery backups with motherboards: PRO1, PRO2, PRO2 V3, PRO3 and NEO3.
Measure	30 x 55 x 120 mm
Own consumption	70 mA
Tension	24 V
Fuses	F10A
Indication	Yes, LED on circuit board

Table 34. Outputs

Info	Explanation
Alarm outputs, number	1
Alarm on alternating relay? (Yes No)	Yes, sum alarm in case of fuse fault
Alarm output protocol (communication protocol)	-
Load outputs, number	10
Voltage at load output	27.3 V DC
Voltage limit, upper, on load output	27.9 V DC
Voltage limit, lower, on load output. For battery operation and disconnected mains voltage.	20 V DC
Priority (always voltage) load outputs (Yes / No)	Yes
Maximum load, per output	10 A
Maximum load, total, (must not be exceeded).	16 A
Load output plus (+) secured? (Yes No)	Yes
Load output minus (-) secured (Yes / No)	No
Fuses on output	Yes, see table: Fuses.
Connection to buzzer? (Yes No)	No

Manufactured in Milleteknik's factory in Partille, Sweden.

This translation is not verified and should be cross referenced with the swedish original before use.

POWER SUPPLY

POWER SUPPLY - TECHNICAL DATA RSP-320-24

In:
BT-15 FLX Large COM Gen 2

Info	Explanation
Output voltage	27.3 V
Output current	0 A - 13.4 A
Output voltage, ripple	150 mVp-p
Overvoltage	27.6 V - 32.4 V
Voltage recharge, ripple / current limitation	Less than 1.2 Vp-p
Efficiency	89%
Current limitation	105% - 135%
Constant voltage	+/- 0.5%
Regulatory accuracy	+/- 1.0%
Input current (230 V)	2 A
Mains voltage frequency	47 Hz- 63 Hz
Mains voltage	230 V AC - 240 V AC
Brand effect	321.6 W
Temperature range	-30°C - +70°C
Humidity range	20% - 90% RH non-condensed

The power supply is adapted and calibrated with the battery / hardware of the battery backup. Only power and calibrated power supplies may be used. Contact support when changing power supplies. Use of power supplies coming from another source may cause damage not covered by the warranty. Warranty is canceled if power supplies (from a source other than support / designated by support) that are not correctly calibrated are used.

POWER SUPPLY - TECHNICAL DATA HRP-600-24

In:
BT-25 FLX LARGE COM Gen 2

Info	Explanation
Output voltage	27.3 V
Output current	0 A - 27 A
Output voltage, ripple	150 mVp-p
Overvoltage	30 V - 34.8 V
Voltage recharge, ripple / current limitation	Less than 1.2 Vp-p
Efficiency	88%
Current limitation	105% - 135%
Constant voltage	+/- 0.5%
Regulatory accuracy	+/- 1.0%
Input current (230 V)	3,6 A
Mains voltage frequency	47 Hz- 63 Hz
Mains voltage	230 V AC - 240 V AC
Brand effect	648 W
Temperature range	-30°C - +70°C
Humidity range	20% - 90% RH non-condensed

The power supply is adapted and calibrated with the battery / hardware of the battery backup. Only power and calibrated power supplies may be used. Contact support when changing power supplies. Use of power supplies coming from another source may cause damage not covered by the warranty. Warranty is canceled if power supplies (from a source other than support / designated by support) that are not correctly calibrated are used.

TECHNICAL DATA ENCLOSURES

ENCLOSURES - TECHNICAL DATA FLX L

Info	Explanation
Name	FLX L
Enclosure class	IP 32
Measure	Height: 444 mm, width 438 mm, depth 212 mm
Height units	10 HE
Mounting	Wall or 19 "rack
Ambient temperature	+ 5 ° C - + 40 ° C. For best battery life: + 15 ° C to + 25 ° C.
Environment	Environmental class 1, indoors. 20% ~ 90% relative humidity
Material	Powder coated sheet
Color	Black
Cable entries, number	4
Batteries that fit	2 st 12 V 45 Ah
Place for fan	Yes

WARRANTY, SUPPORT, COUNTRY OF MANUFACTURE AND COUNTRY OF ORIGIN

WARRANTY 5 YEARS

The product has a five-year warranty, from the date of purchase (unless otherwise agreed). Free support during the warranty period is reached at support@milleteknik.se or telephone, +46 31-34 00 230. Compen-

sation for travel and or working hours in connection with the location of faults, installation of repaired or replaced goods is not included in the warranty. Contact Milleteknik for more information. Milleteknik provides support during the product's lifetime, however, no later than 10 years after the date of purchase. Switching to an equivalent product may occur if Milleteknik deems that repair is not possible. Support may be added (at Milleteknik's discretion) after the warranty period has expired.

SUPPORT

Do you need help with installation or connection?

You will find answers to many questions at: www.milleteknik.se/support

Phone: +46 31-340 02 30

Support is open: Monday-Thursday 08:00-16:00, Fridays 08:00-15:00. Closed 11:30-13:15.

SPARE PARTS

Contacted support for questions about spare parts.

SUPPORT AFTER THE WARRANTY PERIOD

Milleteknik provides support during the life of the product, but no longer than 10 years after the date of purchase. Replacement for an equivalent product may occur if the manufacturer deems that repair is not possible. Costs for support and replacement are added after the warranty period has expired.

COUNTRY OF MANUFACTURE

Country of manufacture / country of origin is Sweden. For more information, contact your seller.

DESIGNED AND PRODUCED BY: MILLETEKNIK AB

Designed and produced by Milleteknik AB

BATTERIES - RECOMMENDED, NOT INCLUDED

BATTERIES ARE NOT INCLUDED THEY ARE SOLD SEPARATELY

Batteries are sold separately.

BATTERY COMBINATIONS BT FLX LARGE COM GEN2

Battery capacity (Ah)	Battery type	Number of batteries	Batteries in unit
45 Ah	45 Ah	2 pcs.	2 in Battery Backup
90 Ah	45 Ah	4 pcs	2 in Battery Backup 2 in Battery Box 1
155 Ah	45 Ah	6 pcs	2 in Battery Backup 2 in Battery Box 1 2 and Batteribox 2

Power supply

Battery capacity (Ah)	Battery type	Number of batteries	Batteries in unit
180 Ah	45 Ah	8 pcs	0 in Battery Backup 2 in Battery Box 1 2 and Batteribox 2 2 and Batteribox 3
225 Ah	45 Ah	10 pieces.	2 in Battery Backup 2 in Battery Box 1 2 and Batteribox 2 2 and Batteribox 3 2 and Batteribox 4

45 AH, 12 V AGM BATTERY

Fits in	Number of batteries
BT-15 FLX Large COM Gen 2	2
BT-25 FLX Large COM Gen 2	2

Battery type	V	Ah
Maintenance-free AGM, lead-acid battery.	12 V	45 Ah

Table 35. 10+ Design life * battery

Article number	E-number	Article name	Terminal	Measure. Height width depth	Weight per piece	Make
MT113-12V45-01	5230546	UPLUS 12V 45Ah 10+ Design Life battery	M5 Bult	197x165x170 mm	14.5 kg	UPLUS

*Design life is the shelf life in years for an unused battery. Environmental factors such as heat and load affect the service life. Batteries that have a durability (+10 Design Life) of 10+ years usually need to be replaced after 5-6 years.

TECHNICAL DATA - BT FUSE 10

Info	Explanation
Short name:	BT FUSE 10
Product description	BT FUSE 10 is a hedging module with 10 fully secured outputs, of which seven are prioritized and three are non-prioritized.
The product fits in	Battery backups with motherboards: PRO1, PRO2, PRO2 V3, PRO3 and NEO3.
Measure	30 x 55 x 120 mm
Own consumption	70 mA
Tension	24 V
Fuses	F10A
Indication	Yes, LED on circuit board

Table 36. Outputs

Info	Explanation
Alarm outputs, number	1
Alarm on alternating relay? (Yes No)	Yes, sum alarm in case of fuse fault

Info	Explanation
Alarm output protocol (communication protocol)	-
Load outputs, number	10
Voltage at load output	27.3 V DC
Voltage limit, upper, on load output	27.9 V DC
Voltage limit, lower, on load output. For battery operation and disconnected mains voltage.	20 V DC
Priority (always voltage) load outputs (Yes / No)	Yes
Maximum load, per output	10 A
Maximum load, total, (must not be exceeded).	16 A
Load output plus (+) secured? (Yes / No)	Yes
Load output minus (-) secured (Yes / No)	No
Fuses on output	Yes, see table: Fuses.
Connection to buzzer? (Yes / No)	No

Manufactured in Milleteknik's factory in Partille, Sweden.

This translation is not verified and should be cross referenced with the swedish original before use.

CONNECTION OF BATTERY BOX

MOUNTING BATTERY BOX WITH BATTERY BACKUP

The battery box is pushed in during the battery backup, (or previous battery box). The battery box is then screwed to a rack or wall. The two enclosures must meet each other without gap.

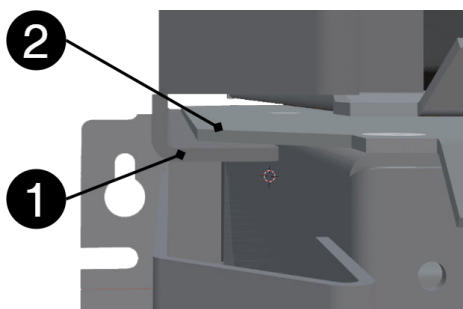


Table 37. Mounting FLX on FLX.

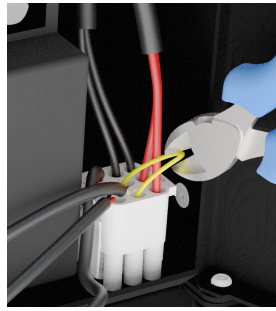
Nr	Explanation
1	Track in battery backup.
2	Protruding part on the roof of the battery box.

INSTALLATION OF BATTERY BOX, WHAT TO DO IN BATTERY BACKUP

Cable gland / knock-out is located on the underside of the battery backup and must be disconnected before mounting.

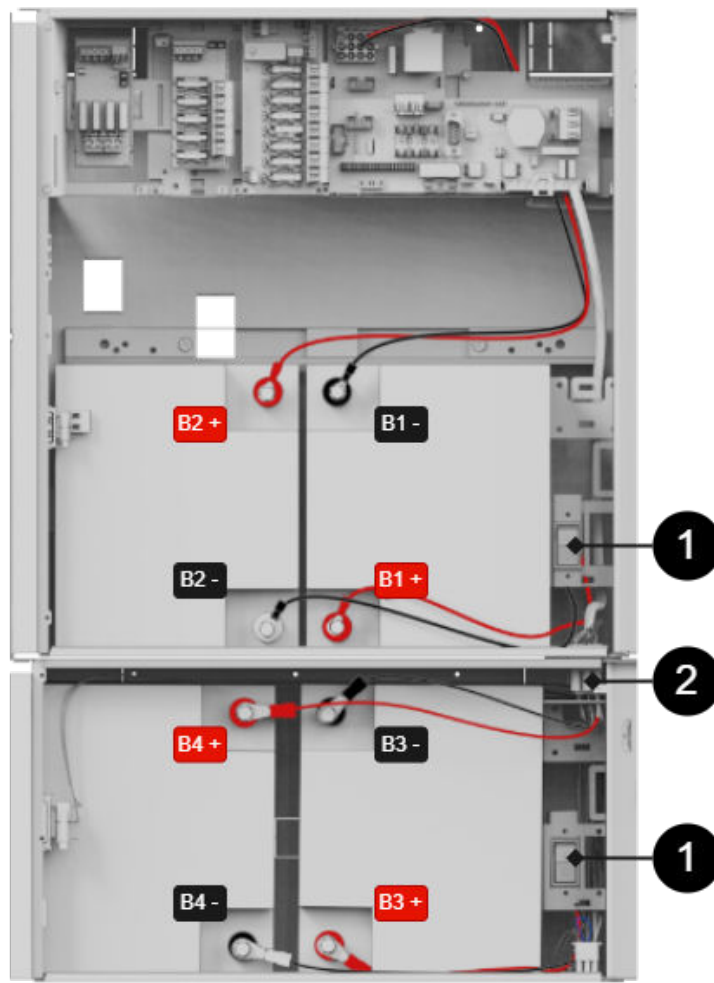
The unit must be de-energized during installation and connection.

- Use the wiring that comes with the battery box to meet the wiring from the battery backup. See picture.



The picture shows cable wiring from the battery backup that meets cables from the battery box

CONNECTION TO BATTERYBOX



The picture also gives an overview of connection points for battery cables and battery fuses.

Table 38. Connecting battery box with battery backup.

Battery cables	Explanation
B1+	Connects to fuse .
B1-	Cable from motherboard is connected to battery .
B2+	Cable from motherboard is connected to battery .
B2-	Connects to fuse .
B3+	Connects to fuse .
B3-	Connected via connector to battery in battery backup .

Battery cables	Explanation
B4+	Connected via connector to battery in battery backup .
B4-	Connects to fuse .

Table 39. Connection

Number	Explanation
1	Battery fuse.
2	Connect battery backup and battery box with white square connector.

TAMPER SWITCH WHEN USING BATTERY BOX(-ES)

If one or more battery boxes have been connected to the unit, the tamper switch must be connected in series in order for alarms from all units to be given. It is important that the series connection ends at the last tamper contact. The series connection must start in the battery backup unit and return to the last battery box.

All tamper contacts must be in series for everyone to be part of the alarm chain. Therefore, the yellow cable that is in the jackable connector must be cut on all connecting cables, except the last on. The cable must not be cut on the last connection / battery box.

ADDRESS AND CONTACT DETAILS

RCO Security AB
 Box 3130
 S-169 03 Solna
 Sweden
 +46 8-546 560 00
 info@rco.se
 www.rco.se

This page is intentionally left blank.
